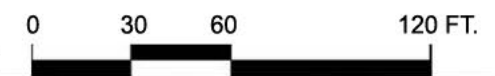




### SUMMARY ●

Lot Area =	81,130 sf / 1.86 acres
Building Area	
Ground Floor	29,000 sf
Total	29,000 sf
Landscaping	8,219 SF (10.13%)
Leasable Area	
Ground Level	29,000 sf
Total	29,000 sf
Parking Required @4/1000	116 stalls
Parking Provided	
Standard parking (8'-6"x18')	92 stalls
Compact parking (8'-0"x15')	20 stalls
Handicap parking (9'-0"x18')	4 stalls
Total	116 stalls
Parking Provided Ratio	4.00 /1000





### KEY ANNOTATION

- ① EXTERIOR SIGNAGE UNDER SEPARATE PERMIT
- ② FIXED GLASS CASEMENT WINDOW ON ALUMINUM FRAME
- ③ SMOOTH PAINTED FINISH CONCRETE WALL
- ④ RTU UNITS LOCATION TBD
- ⑤ STAIR LEADING TO PUBLIC SIDEWALK
- ⑥ (E) SIDEWALK LEVEL
- ⑦ LINE OF ROOF BEYOND
- ⑧ STOREFRONT GLAZING
- ⑨ EXTERIOR CEMENT PLASTER OVER CMU
- ⑩ CORNICE MOLDING
- ⑪ SIDEWALK PAVEMENT
- ⑫ LANDSCAPING VINE TRELLIS
- ⑬ E.L.F.S. DECORATIVE ORNAMENTS WITH CUSTOM MADE FOAM MOLDINGS
- ⑭ ROLL-UP DOOR
- ⑮ STEEL CANOPY
- ⑯ SPLIT FACE CMU
- ⑰ SPANDREL GLASS
- ⑱ VISION GLASS
- ⑳ CMU PRECISION PAINTED

CONCEPTUAL ELEVATION

