



County of Los Angeles

ALTADENA

COMMUNITY
RESOURCE GUIDE

2008

CONNECTION

ARTS
IN THE
COMMUNITY

TABLE OF CONTENTS

Welcome	1
Altadena: Our Home	
<i>Arts in the Community: Creative Forces Converge on Altadena</i>	2
Altadena's Artistic Tradition Continues Today: Mary Buck.....	3
The Coffee Gallery Backstage.....	4
Gallery at the End of the World.....	5
Altadena Community Center / Altadena Town Council /	
Altadena Historical Society / Altadena Chamber of Commerce.....	6
Altadena Foothills Conservancy / Altadena Heritage /	
NAACP Altadena Branch / Sheriff's Support Group of Altadena.....	7
Seniors Services/Activities	
Altadena Senior Center.....	8
Dial-A-Ride.....	9
Libraries	
Altadena Main Library.....	10
Bob Lucas Memorial Branch Library.....	11
Los Angeles County Public Library Resources.....	11
Recreation	
Local Parks.....	12
Golf in Altadena.....	18
Eaton Canyon Natural Area and Nature Center.....	18
Arboretum & Botanic Garden.....	20
Descanso Gardens.....	21
Santa Fe Dam Recreation Area.....	22
Hollywood Bowl and the John Anson Ford Ampitheatre.....	23
2008 Altadena At-A-Glance Telephone & Website Directory.....	24-25
Altadena Map.....	26
Recreation (continued)	
Marina Del Rey.....	27
Arts/Museum	
Los Angeles County Arts Commission.....	28
Los Angeles County Museum of Art (LACMA).....	29
Natural History Museum.....	30
Public Safety	
Altadena Sheriff's Station / California Highway Patrol / Graffiti Removal.....	31
Los Angeles County Police.....	32
Altadena Fire Stations.....	33
Home Fire Safety Tips / Office of the District Attorney.....	35
Community Resources/Services	
Department of Consumer Affairs / Car Buyer's Bill of Rights.....	36
County of Los Angeles Community Development Commission.....	37
Assessor / Property Taxes / Agriculture/Weights & Measures.....	38
DPSS - LA County Helps & Toy Loan Program / Adoption Support Services.....	39
eGovernment – Online Public Works Services / Animal Care & Control.....	40
Regional Planning.....	41
Health/Environmental Safety and Code Enforcement	
Health Centers / Protect Your Property Value.....	42
Public Health – Environmental Protection Program / Sewer Maintenance.....	43
Hazardous Household Waste Recycling / West Nile Virus.....	44
Transportation	
Altadena Summer Beach Bus / Access Paratransit.....	45
Discount Metro Passes.....	46
Public Works Road Projects in Altadena / New Street Signs.....	47
2-1-1 LA County Information.....	48
Christmas Tree Lane.....	49
Your Guide to Emergency Planning.....	Insert

DEAR ALTADENA COMMUNITY MEMBER,

The County of Los Angeles is pleased to offer the annual edition of the **Altadena Connection!** This resource guide highlights valuable information for Altadena residents on local and regional County services, arts and recreation, organizations proudly represented in the community, and important safety and emergency information.

In addition to activities at your local parks (Farnsworth, Loma Alta, and Charles White), golf courses (Altadena and Eaton Canyon), and nature area (Eaton Canyon), this guide also features many fun activities in nearby Los Angeles County attractions, such as the Arboretum, National History Museum, and the Los Angeles County Museum of Art. This year's Connection also captures just a sampling of the creative and artistic traditions of Altadena, both past and present. We would like to express special thanks to Mary Buck, Bob Stane at the Coffee Gallery Backstage, Ben McGinty and Matt Foote at the Gallery at the End of the World, and Michele Zack and the Altadena Historical Society.

We hope you enjoy this guide and encourage you to save it for use as a handy reference. If you have any comments on your **Altadena Connection**, you can e-mail us at: uas@ceo.lacounty.gov or write to us at: Chief Executive Office, Office of Unincorporated Area Services, 500 West Temple Street, Room 723, Los Angeles, CA 90012.

Thank you!



Living in Unincorporated Altadena

Altadena is one of many areas in the County of Los Angeles that is not classified as a city, but is known as an unincorporated community. In unincorporated communities such as Altadena, the role of the local city government is performed by the County who is responsible for providing and maintaining municipal (local) services such as law enforcement, fire, road maintenance, parks, zoning, building permits, and animal care and control.

As a resident of an unincorporated area, you are being represented by the Los Angeles County Board of Supervisors who serve as your "City Council." The five-member Board of Supervisors, each representing a County district, are responsible for establishing policies and regulations that affect you and your fellow Altadena residents.

We are here to serve you! The Board of Supervisors designates deputies to help them represent your community. Altadena is represented by the **Fifth Supervisorial District**.

Pasadena Field Office

215 North Marengo Avenue, Suite 120
Pasadena, CA 91101
(626) 356-5407

ALTADENA: OUR HOME

Creative Forces Converge on Altadena

Altadena has been home to many notable artists, writers, musicians, and people in the entertainment industry over the years. Here are just a few of the many creative souls who have called Altadena home. These individuals are profiled in Michele Zack's comprehensive book on Altadena history, *Altadena: Between Wilderness and City* (2004) published by the Altadena Historical Society.



▶ **ZANE GREY** was a one-time semiprofessional baseball player and dentist who went on to become one of the greatest storytellers of the American West. In addition to writing over 80 books, mainly Western novels, Grey was also a filmmaker and avid adventurer who sailed the world in his own fleet.

▶ **KAY NIELSEN** was one of the most famed artists of the “Golden Age of Illustration” (1900-1925) and his designs were featured in the “Ave Maria” and “Night on Bald Mountain” sequences of Disney’s *Fantasia*. Nielsen and his wife, Ulla, moved to Marigold Street in Altadena in 1936 where they were neighbors with writer Hildegard Flanner and her husband Modernist architect Frederick Monhoff.



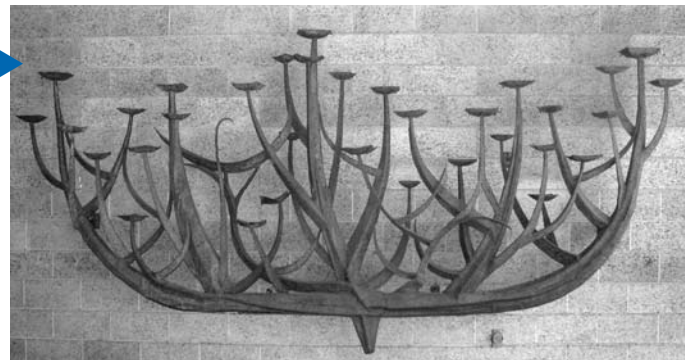
▶ **HOLLING C. HOLLING** wrote and illustrated award-winning children’s books from the 1940s to 1970s, many with the help of his wife Lucille. His

trademark was illuminating culture and geography through literature.



▶ **CHARLES WHITE** was a prominent artist whose work reflected the African American experience. White and his wife, Frances, were introduced to Altadena by his friends Sidney Poitier and Ivan Dixon, young actors in the late 1950s. White also taught and served as the chair of the drawing department at the Otis Art Institute.

▶ **DAVID GREEN** is most well known for his bronze and steel owl sculptures which should be familiar to visitors of the Altadena Main Library. His work won broad recognition over a long career as a successful artist, designer, and chair of Otis Art Institute’s sculpture department.



*Special thanks to the Altadena Historical Society and Michele Zack. To purchase **Altadena: Between Wilderness and City**, please call the Altadena Historical Society at (626) 797-8016.*

ALTADENA: OUR HOME

IAN WHITCOMB was a British rocker who performed the 1965 hit “You Turn Me On” and toured with legendary bands such as the Rolling Stones, the Kinks, and the Beach Boys. He moved to Alameda Street in the late 1970s after his career as a heartthrob morphed into one of author, musical historian, radio host, and performer specializing in old-time tunes.



▶ **JOHNNY OTIS** who excited fans with his soulful R&B rock sound since the 1940s as a bandleader, composer, and popular radio and television host, lived on Palm Street in the 1980s.

JIRAYR ZORTHIAN enjoyed a long career as a painter, sculptor, and social magnet for the art community. His and wife, Dabney’s, foothill estate was a work of art dedicated to the proposition that one man’s trash provides ingredients for another’s masterpieces. Zorthian traded art lessons for ones in physics with Altadena’s Nobel

Laureate Richard Feynman for years, and his bacchanalian birthday/primavera fests continued until his death in 2004 at the age of 92.



Altadena’s Artistic Tradition Continues Today

If you have an Altadena Library Card, you are in possession of a vivid piece of artwork by local Altadena artist, Mary Buck. Titled “Altadena Sunset,” the colorful painting captures the natural beauty of Altadena through the use of vibrant abstract colors.

“I feel each artist has been given a unique way of seeing and expressing that inner or outer vision. I re-create life as I experience it from within and without. I feel compelled to share it with the whole universe. This is my life’s work. I truly enjoy being creative.”

- MARY BUCK

Mary’s work as an artist is diverse, using more than eleven different mediums to express her creativity. Her eclectic work covers everything from the almost photo realism of her graphite and linoleum prints, abstract or organic abstract pastels and water colors, assemblages and mixed media collages, and photography of the local natural world. Mary has also taught elementary school in Altadena for 23 years.



Mary Buck

Featured on the cover of this year’s Altadena Connection

ALTADENA: OUR HOME



THE COFFEE GALLERY BACKSTAGE is the sophisticated and witty musical entertainment spot every community in America wishes it has. Its cozy, rustic confines relaxes and warms patron and entertainer alike with its caffeine and snack driven ambience, comfortable seating, professional sound acoustics and lighting system, and a special atmosphere designed by a Hollywood set architect. Everything was designed to please every sense and do it in an “up close and personal” space. The Backstage is a magnet for those who admire or perform “good” music with a comedy twist. The personable owner, Bob Stane, who operated The Ice House in Pasadena, is on-hand nightly to greet and joke with all comers with the old fashioned, tongue-in-cheek aplomb of a club owner circa 1940. Bob is known for boosting the careers of dozens of acts who have often appeared on The Tonight Show with Jay Leno and Late Night with David Letterman. Both of those television hosts claim Bob as one of their very early employers, as do Steve Martin, Gallagher and Tom Waits just to name a few.



Bob also books the acts at the Coffee Gallery Backstage, who have included nationally famous entertainers such as The Prairie Home Companion Show. Some acts may appear at the Backstage on a Thursday night and go right to a date at The Lincoln Center or Carnegie Hall on Saturday. The Backstage is not only a top purveyor of American entertainers but one of the most aggressive bookers of top-flight traveling international acts.

The Coffee Gallery Backstage
2029 N. Lake Avenue
Altadena, CA 91001

(626) 398-7917
www.coffeegallery.com

If you want to know how Bob manages to get such big time acts in a 50 seat venue, you have to come on over to a show at the Coffee Gallery Backstage and ask him yourself.

Visit www.coffeegallery.com
or call (626) 398-7917 for a schedule of upcoming shows.



ALTADENA: OUR HOME

McGinty's Gallery At The
End of the World
2475 N. Lake Avenue
Altadena, CA 91001

(626) 794-8779

[www.myspace.com/
galleryattheendoftheworld](http://www.myspace.com/galleryattheendoftheworld)

Email:
galleryattheendoftheworld@yahoo.com



THE GALLERY AT THE END OF THE WORLD (GATEotw) is the gallery and studio home-base for members of what since 2002 has been known as the “Underground Artists Society” (UAS). Owner Ben McGinty has occupied the space (and until recently, the one next door as well) since 1994, and its various incarnations have included a café, a vintage clothing “haberdashery”, a tattoo parlor, and a salon-style cooperative community art gallery. In mid-2006, Matt Foote, a long time member of UAS, became the Multimedia Coordinator when the gallery was renamed “Gallery At The End Of The World” after a short-lived gallery Foote once had in Hollywood. Around then, Foote started creating press releases and media kits for the GATEotw. Thanks to the combination of McGinty’s infrastructural creativity and Foote’s media and marketing creativity, the GATEotw has come to throw truly world-class art events called ARTBENDER Weekends. Call (626) 794-8779 or visit the GATEotw Myspace page at www.myspace.com/galleryattheendoftheworld for more information.



ALTADENA: OUR HOME

Altadena Community Center

730 East Altadena Drive, Altadena, CA 91001
Phone: (626) 398-6174 Fax: (626) 296-1198
www.altadenacommunitycenter.net
Monday through Friday: 8:00 am - 5:00 pm



The Altadena Community Center is truly a unique public-private partnership which serves as a community meeting place and a town hall. It also houses a local office of the Los Angeles County Department of Community and Senior Services and several community based organizations: **Altadena Town Council**, **Altadena Chamber of Commerce**, **Altadena Branch of the NAACP**, **Altadena Historical Society**, **Altadena Heritage**, **Altadena Foothills Conservancy**, and the **Sheriff's Support Group of Altadena**. The Center includes a community room, offices, kitchen and a museum. The community room can be reserved for meetings and other special events.

The Altadena Town Council Welcomes the Community!

730 East Altadena Drive, Altadena, CA 91001
www.altadenatowncouncil.org



ALTADENA TOWN COUNCIL
serving the Altadena community since 1975

Your local forum to voice community concerns is the Altadena Town Council. This organization consists of Altadena residents like yourselves who volunteer their time to hear input from local residents and make recommendations to your elected County officials and County staff.

Meeting Schedules

Meetings are held at the Altadena Community Center, 730 East Altadena Drive.

Altadena Town Council - Meets on the third Tuesday of each month at 7:00 pm. The meetings are recorded and later televised on Pasadena's Community Access Channel. Check your local listings for times.

Traffic Committee - Meets on the first Monday of each month at 7:00 pm.

Land Use Committee - Meets on the first Tuesday of each month at 7:00 pm.

Council rosters, meeting minutes and agendas, by-laws, and other information can be found on the website or by writing to the address listed above. See you at the next Altadena Town Council Meeting!



Altadena Historical Society

Altadena Community Center
730 Altadena Drive, Altadena, CA 91001
(626) 797-8016
www.mtlowe.net/altadenahistoricalsociety.htm
Mon. & Tue., 9:00 am - 1:00 pm or by appointment

The Altadena Historical Society is a non-profit organization founded in 1935 to collect and archive those items of particular interest that reflect the historical value of Altadena. In addition to having a large collection of Altadena memorabilia, the Altadena Historical Society also publishes a quarterly newsletter, *The Echo*, and hosts informational programs for members and the public.

The Altadena Chamber of Commerce

Altadena Community Center, 730 Altadena Drive, Altadena, CA 91001
Phone: (626) 794-3988 Fax: (626) 794-6015
E-mail: altadenachamber@earthlink.net Web: www.abacus-es.com/altadena

Incorporated in 1924, the Altadena Chamber of Commerce and Civic Association actively promotes the commercial, industrial, civic and general interests of your community and its trade area.

The Chamber hosts monthly networking mixers; produces special events; publishes the monthly Chamber Bulletin and the annual Altadena Directory; maintains a website; provides input to the community; and provides information about Altadena to visitors, prospective residents and businesses.



ALTADENA: OUR HOME

Altadena Foothills Conservancy

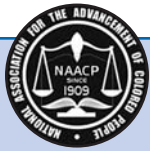
www.altadenafoothills.org

The Conservancy's mission is to preserve and restore open, undeveloped lands and associated historic trails and structures in the foothills of Altadena. The Conservancy focuses on the foothills habitat that provides a buffer between the developed residential community and the steep and rugged San Gabriel Mountains, stretching from Arroyo Seco to Eaton Canyon.

New Pocket Park Coming Soon at the Intersection of Woodbury and Marengo

The Conservancy is currently working with the Altadena Watershed Committee and several other partners including Los Angeles County and the City of Pasadena Water and Power Department to transform a bare dirt patch at the southwest corner of Marengo Avenue and Woodbury Road into a small water-wise pocket park. The triangular, 8,000-square-foot park will not only give area residents a small nearby park, but will also serve as a miniature watershed, demonstrating how water can be used efficiently and effectively in a park by planting California native plants.

Organizers envision the park using aspects of the habitat found in the San Gabriel Mountains and foothills. Plans for the park call for dozens of native California plant types, including coast live and Engelmann oaks, pepper trees, deer grass, lupines and bushes such as pink fairy dusters, sticky monkey flowers and white sage.



National Association for the Advancement of Colored People (NAACP) ALTADENA BRANCH

Altadena Community Center
730 E. Altadena Drive • Altadena, CA 91001
(626) 794-7999

The Altadena Branch of the NAACP is a member of the nation-wide association founded in 1909.

2008 marks the 25th anniversary since the Altadena Branch was chartered. The Altadena Branch continues to do the work of the NAACP with regard to all issues that impact the protection and enhancement of civil and human rights.

ALTADENA HERITAGE

Altadena Community Center
730 Altadena Drive • Altadena, CA 91001
(626) 797-0054 • www.altadenaheritage.com
Hours: Mondays 9:00 am - 1:00 pm
Tuesdays 10:00 am - 1:00 pm

Altadena Heritage is dedicated to protecting and preserving the rich architectural, environmental, and cultural history of the unique foothills community. Altadena Heritage's projects include home tours of historic properties, designation of historic overlay zones, educational resources and programs, preservation and beautification, and researchable archives.

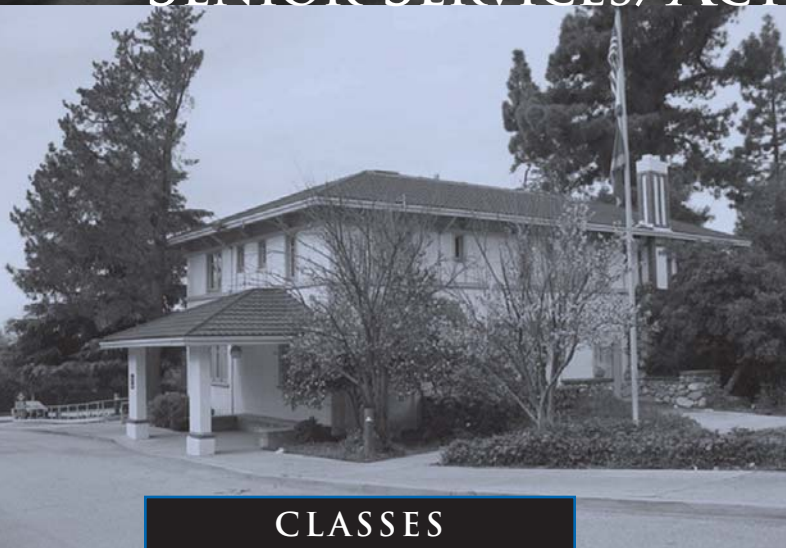
Sheriff's Support Group of Altadena (SSGA)

Altadena Community Center
730 E. Altadena Drive • Altadena, CA 91001
(626) 578-8570
www.altadenasheriffs.org
www.altadenasheriffs.blogspot.com

The Sheriff's Support Group is a non-profit 501(c)(3) community service group whose purpose is to support the Altadena Sheriff's Station by providing services and materials.

Visit the new website www.altadenasheriffs.blogspot.com for the latest SSGA updates and events.

SENIOR SERVICES/ACTIVITIES



Altadena Senior Center

560 E. Mariposa St. Altadena, CA 91101

Phone: (626) 798-0505

Monday - Friday, 8:00 am - 5:00 pm

The Altadena Senior Center is a community focal point where seniors can come together for services, programs, and activities in order to be involved in and with the community, support their independence and enhance their dignity. If you are 50 and over, you are eligible for all of its programs and services. The Center is administered by the Los Angeles County Department of Community and Senior Services, in conjunction with the County's Area Agency on Aging.

CLASSES

Art
Ballroom Dancing
Chinese Brush Painting
Bridge
Creative Sewing
Quilting
Line Dancing
Exercise
Folk Dancing
Golf
Memoirs Writing
Painting
Senior Support
Sewing & Needlecrafts
Spanish Review
Yoga
Chi Gong
Crafts
Diabetic Support

Other Activities and Services:

- A fully equipped fitness center with Jacuzzi
- Award winning nutrition program (11:30 am)
- Special Birthday Luncheon on the (Last Friday of every month)
- Newly released movies (Fridays at 12:30 pm)
- Red Hat Society (2nd Tuesday of month at 10:00 am)
- Computer classes. (By appointment)
- Internet public access (Wednesdays 9:00 am - 3:00 pm)
- Income tax and renter's credit assistance (Annually)
- Taxi coupons (2nd Friday of month from 9:00 am - 12:00 pm)
- Billiard room including card and board games
- Day & overnight trips to destinations both locally and outside of Los Angeles County (Sign up on Monday, Wednesday, & Friday 10:00 am - 12:00 pm)
- Blood pressure & diabetes clinics (3rd Wednesday of month from 9:00 - 11:30 am)
- Case management (Last Friday of month by appointment)
- Legal services (3rd Thursday of each month by appointment)
- "Seniors On The Move" (2nd & 4th Wednesday of month at 9:00 am)

UPCOMING SPECIAL EVENTS

- Annual Disaster Preparedness Seminar
- Relay for Life With American Cancer Society
- National Alzheimer's Association Memory Walk
- Spring Festival (April 2008)
- Golf Tournament (July 2008)
- Health, Arts & Crafts Fair (September 2008)
- Volunteer Luncheon (November 2008)
- Christmas Party (December 2008)



senior softball

Every Monday at Farnsworth Park

Play softball with other seniors Monday mornings from 8:00 am to 10:00 am. Then stay for the Senior Social and Potluck from 10:00 am to 12:00 pm. Farnsworth Park is at 568 E. Mount Curve Avenue. Call (626) 798-6335 for more information.



Seniors can get around Altadena and Kinneloa Mesa with DIAL-A-RIDE

Are you 60 years or older, or do you have a disability, and reside within the unincorporated areas of Altadena or Kinneloa Mesa? If so, the Department of Public Works offers a shared ride, curb-to-curb transportation service to assist you. Call (626) 744-4094 today to apply for Dial-A-Ride services.

Eligibility Requirements:

- Proof of age and residency is required for riders 60 years or older.
- Riders under the age of 60 years require proof of residency and a letter from a physician specifying condition of disability, or a “disabled” card.
- Escorts or friends, who are 12 years or older, may accompany eligible riders.

Fare/Fee: 50¢ per one-way trip.

Hours of Service:

Monday - Friday	7:00 am - 9:00 pm
Saturdays	9:00 am - 7:00 pm
Sundays	7:00 am - 7:00 pm
Christmas Eve, Day after Thanksgiving	9:00 am - 7:00 pm



Service is not provided on New Year’s Day, Memorial Day, 4th of July, Labor Day, Thanksgiving, and Christmas.

To schedule a ride:

Call (626) 791-7200 on Monday through Friday between 8:00 am to 5:00 pm, at least 24 hours prior to your trip. Same day service is provided subject to availability of vehicle, time, and capacity.

For more information, please call (626) 458-3952 or visit www.LAGoBus.Info and click on “Dial-A-Ride Services” link in the left hand column.

Altadena Main Library

600 East Mariposa Street
Altadena, CA 91001
(626) 798-0833
www.altadenalibrary.org



ALTADENA LIBRARY DISTRICT

HOURS

Mondays & Tuesdays 10:00 am - 9:00 pm
Wednesday - Saturday 10:00 am - 6:00 pm
Sundays 1:00 pm - 5:00 pm



The Altadena Main Library carries over 130,000 books and offers many services including:

- Children's Preschool Story Time
- Children's Computer Center
- Adult Book Club (Meets 2nd Tuesday of the month at 7 pm)
- Summer Reading Program
- Public Access Computers and Services
- 24/7 Reference Services Online
- Interlibrary Loan
- Thousands of CDs, DVDs, videos
- Literacy Programs
- Special Events and Programs

Visit the Altadena website, www.altadenalibrary.org, for the latest announcements of scheduled events for children, teens, and adults. The website also offers on-line librarian assistance, electronic resources and online databases, and the ability to renew material.

New Features and Ongoing Programs at the Altadena Library

- **Wireless Internet** is now available for your laptop computers at the Main and Branch Libraries.
- **Live Homework Help** - Free online tutoring for students in grades 4-12 and college freshmen is available at the Library or online from your home computer with your Altadena Library Card at www.altadenalibrary.org by clicking on the "Live Homework Help" link.
- **Passport Processing** - The library is a designated Passport Application Acceptance Facility and offers services processing passport applications and photos.
- **Community Room** - The Altadena Library District has meeting room accommodations for community groups and organizations which includes a lectern, audio-visual equipment, tables, a piano, a kitchenette, and facilities for exhibiting artwork. For reservations and more information, please call (626) 798-0833 or visit www.altadenalibrary.org/community.

Did You Know?

You can search the entire library catalog and check on the availability of the book you are looking for from any computer with access to the Internet. Just go to <http://catalog.altadenalibrary.org> and start searching!

Bob Lucas Memorial Library and Literacy Center

2659 Lincoln Avenue
Altadena, CA 91001
(626) 798-8338

HOURS

Mondays, Tuesdays, & Fridays 1:00 pm - 6:00 pm
Wednesdays & Thursdays 1:00 pm - 8:00 pm
Closed Saturdays & Sundays



The Bob Lucas Memorial Library and Literacy Center is a branch of the Altadena Main Library on Lincoln Avenue in West Altadena. The Literacy Center provides an adult reading program called “Let’s Read, Altadena!” Other literacy programs include: Discover Intensive Phonics, Families for Literacy, English Language and Literacy Intensive Program, and community education classes.

Activities provided at the Bob Lucas Branch include:

- **Children’s Activities** – Homework assistance for elementary school students, Crafts for Fun, Youth Month, Summer Reading Club, Video Friday, and holiday programs.
- **Family Services** – The Families for Literacy Program enhances the full family participation and fosters a family environment conducive to reading and familiarity with the library and services.



County of Los Angeles Public Library Offers Online Services

With a free County Public Library card, you can have access to a variety of helpful services from your own computer. Just apply at any one of the County’s 84 public libraries! Visit www.colapublib.org for a list of locations.

You can use our premium research tools to find information about business, health and medical issues, genealogy, car repair, homework topics for students of all ages, and much more. To access these resources, go to www.colapublib.org, click on “Find Articles and More” at the top of the page, select the resource you want, and enter your library card number.

The closest County Public Library to Altadena is:

LaCañada-Flintridge Library
4545 North Oakwood Avenue
La Cañada, CA 91011
(818) 790-3330



Live Homework Help!

*Tutoring every day
from 1:00 pm - 10:00 pm*

Students with County Public Library cards in grades 4-12 can connect to live tutors through the Internet. Expert tutors from Tutor.com will provide homework assistance in English, math, social studies, and science. Live Homework Help is available in English or Spanish at County libraries on any public access Internet computer as well as from home computers. Live Homework Help can be accessed at www.librarytutor.org.

Altadena's Local Parks

The Los Angeles County Department of Parks and Recreation (DPR) is proud to offer local recreational activities and special events to the residents of Altadena at three local parks: Farnsworth, Loma Alta, and Charles White Parks.

Since this resource guide is an annual publication, some events listed do not include dates and times because the schedule for 2008 has not been finalized. If you are interested in any of these events or activities, we recommend that you contact the park facility directly or call DPR at (213) 738-2961.



CHARLES S. FARNSWORTH PARK

568 E. Mount Curve Ave.
Altadena, CA 91001
(626) 798-6335 Fax: (626) 296-3260
Hours: 8:00 am to 8:00 pm

YOUTH/TEEN PROGRAMS & ACTIVITIES

AFTER SCHOOL CLUB

January 2008 - June 2008
September 2008 - December 2008
Monday - Friday
Fee: \$20 week (daily snack included)

5 - 12 years

2:00 pm - 6:00 pm

FRIDAY NIGHT LIVE

Friday (Year Round)
Fee: \$5 per child/per week

5 - 12 years

6:00 pm - 10:00 pm

SPRING DAY CAMP

March 17 - 28, 2008 (no camp on holidays)
Monday - Friday
Fee: \$45 per week/per child

6 - 12 years

7:30 am - 6:00 pm

SUMMER DAY CAMP

June 17 - August 29, 2008 (no camp on July 4)
Monday - Friday
Fee: \$45 per week/per child

6 - 12 years

7:30 am - 6:00 pm

TEEN CLUB

Wednesdays (Year-Round)
Fee: No Charge

13 - 18 years

6:30 pm - 8:00 pm

TINY TOTS

January 2008 - June 2008
September 2008 - December 2008
Monday - Friday
Fee: \$50 per month

3 - 5 years

9:00 am - 12:00 pm

WINTER DAY CAMP

December 22, 2008 - January 2, 2009
(no camp on holidays)
Monday - Friday
Fee: \$45 per week/per child

6 - 12 years

7:30 am - 6:00 pm

YOUTH/TEEN SPORTS

CENTRAL ALTADENA LITTLE LEAGUE

Summer/Fall 2008
Call (626) 403-1036 for information on dates, times and fees.

5 - 12 years

WRESTLING

Tuesdays and Thursdays (Year Round)
Beginners
Advanced
Fee: \$20 per month (includes uniform)

5 years and up

6:00 pm - 7:30 pm

7:30 pm - 9:00 pm

YOUTH BASKETBALL

Begins January 19, 2008
Dates and Times: TBA (12 game season)
Fee: \$40/season

5 - 14 years

CHARLES S. FARNSWORTH PARK

YOUTH/TEEN SPORTS *continued*

YOUTH FLAG FOOTBALL *5 - 14 years*
 Begins September 20, 2008
 Dates and Times: TBA (12 game season)
 Fee: \$40/season

YOUTH USTA TENNIS (YEAR-ROUND) *7 - 17 years*
 Wednesdays 5:30 pm - 7:30 pm
 Saturdays 12:00 pm - 2:00 pm
 Fee: \$12.00 per six week session
 For information, call Eddie Williams at (626) 844-1546.

SPECIAL EVENTS

BLACK HISTORY MONTH CELEBRATION *All ages*
 Saturday, February 23, 2008 4:00 pm
 Fee: No Charge

EASTER EGGSTRAVAGANZA *13 years and under*
 Saturday, March 22, 2008 1:00 pm
 Fee: No Charge

CINCO DE MAYO CELEBRATION *All ages*
 Saturday, May 3, 2008 Time TBA
 Fee: No Charge

TEEN SUMMIT *Youth in grades 9 - 12*
 Friday, May 9, 2008 8:00 am - 3:30 pm
 Fee: No Charge



ADULT/SENIOR ACTIVITIES

SENIOR SOCIAL AND POTLUCK *55 years and up*
 First Monday of the month
 (Year Round) 10:00 am - 12:00 pm
 Fee: No Charge

SENIOR SOFTBALL *55 years and up*
 Mondays (Year Round) 8:00 am - 10 am
 Fee: No Charge



SUMMER CONCERTS IN THE PARK *All ages*
 Dates and Times: TBA
 Fee: No Charge

FARNSWORTH HAUNTED MANSION *All ages*
 October 25 - 31, 2008 7:00 pm - 10:00 pm
 Fee: \$4 per ticket/ \$2 presale

THANKSGIVING TURKEY TOSS AND FOOD DRIVE *All ages*
 Saturday, November 15, 2008 11:00 am
 Fee: One canned good donation

SANTA'S COMING TO TOWN *13 years and under*
 Saturday, December 20, 2008 11:00 am
 Fee: No Charge

RECREATION

LOMA ALTA PARK

3330 North Lincoln Avenue
Altadena, CA 91001

General Phone: (626) 794-8811 Fax: (626) 797-6826

Gym Telephone: (626) 398-5451 and (626) 398-5452

Gym Fax: (626) 798-9588

Park Hours: Monday - Friday 7:30 am - 10:00 pm
Saturdays & Sundays 12:00 - 7:00 pm

Look forward to Community Center and Playground Refurbishments

The well used community center at Loma Alta Park will undergo general improvements in 2008 to better serve the community. Meanwhile, the children's playground will also receive a facelift including new play equipment and ADA access.



YOUTH/TEEN PROGRAMS & ACTIVITIES

ABALAYA AFRICAN DANCE

Thursdays (Year Round)
Fee: \$5 per class or \$10 per family

All ages

7:00 pm - 8:30 pm

ACTING CLUB

October 9, 2008 - June 2009
Thursdays
Saturdays
Fee: \$20 month

6 - 20 years

7:00 pm - 9:00 pm
7:00 pm - 10:00 pm

AFTERSCHOOL PROGRAM

January 2008 - June 2008
September 2008 - December 2008
Monday - Friday
Fee: \$10 per week

6 - 12 years

2:00 pm - 7:00 pm

BALLET

Tuesdays (Year Round)
Fee: \$30 per month

5 years and up

5:45 pm - 6:45 pm

DRILL, DRUMS & CHEERLEADING CLASS

October 3, 2008 - June, 2009
Fridays
Fee: No Charge
(Members are responsible for uniforms and drums)

7 - 17 years

5:00 pm - 7:00 pm

GARDENING CLUB

Tuesdays and Thursdays (Year Round)
Fee: No Charge

6 - 13 years

4:00 pm - 5:00 pm

KIDS CORNER

Monday - Friday (Year Round)
Program 1:
Program 2:
Fee: No Charge

2 - 5 years

12:30 pm - 3:30 pm
3:30 pm - 6:00 pm

SATURDAY RECREATION ADVENTURE

Saturdays (Year Round)
Fee: \$5

6 - 13 years

12:00 pm - 5:00 pm

SPRING BREAK CAMP

April 2008 (Exact dates TBA)
Monday - Friday
Program 1:
Program 2:
Fee: \$45 per week (ask about extended hours fees)

6 - 12 years

8:00 am - 5:00 pm
9:00 am - 6:00 pm

TINY TOTS

Monday - Friday (Year Round)
Fee: No Charge

2 - 5 years

9:30 am - 12:30 pm

TOY LOAN PROGRAM

Thursdays and Fridays (Year Round)
Fee: No Charge
Call (213) 744-4344 for more information.

2 - 12 years

3:00 pm - 6:00 pm

YOUTH FOR A BETTER ALTADENA

Fridays (Year Round)
Fee: \$20 per year

13 - 19 years

5:00 pm - 7:00 pm

LOMA ALTA PARK

YOUTH/TEEN SPORTS

BADMINTON *13 years and up*
Sundays (Year Round) 1:00 pm - 4:00 pm
Fee: No Charge

CO-ED BASKETBALL *3 - 15 years*
July - September 2008
October 2008 - February 2009
Tuesdays and Thursdays 5:30 pm - 8:30 pm
Fee: \$65 per child

FLAG FOOTBALL *5 - 15 years*
Registration August 2008
League starts October 15, 2008
Practices Tuesdays and Thursdays (Time TBA)
Saturday games
Fee: \$35 per session



GIRLS VOLLEYBALL CAMP *7 - 17 years*
March 2008
For more information, please call (818) 249-8505

LITTLE PEE WEE GRAPPLERS *3 - 6 years*
November 2008 - January 2009
Tuesdays, Thursdays and Saturdays 11:00 am - 11:45 am
Fee: No Charge

VERONICA BADEN TENNIS CLASSES *4 - 18 years*
Monday - Thursday (Year Round) 4:00 pm - 5:00 pm
Saturdays (Year Round) 11:30 am - 1:00 pm
Fee: \$35 per session (includes jersey and trophy)

**WEST ALTADENA
SPRING LITTLE LEAGUE** *5 - 15 years*
For more information, please contact Ryan Graves at
(626) 791-1588.

ADULT/SENIOR ACTIVITIES

ABALAYA AFRICAN DANCE *All ages*
Thursdays (Year Round) 7:00 pm - 8:30 pm
Fee: \$5 per session, Family: \$10 per session

COMPUTER LAB *All ages*
Users must sign a registration form. Minors under the age of 18 years must be supervised by a parent or guardian.
Call park for days and times.
Fee: No Charge

**EBONY BALLET, MODERN & JAZZ
DANCE COMPANY** *All ages*
Tuesdays and Thursdays (Year Round) 7:00 pm - 8:00 pm
Fee: \$30 per four weeks
For information, please call Jan Blunt at (626) 798-2341.

PHYSICAL FITNESS CENTER *18 years and up*
Monday - Saturday (Year Round) 8:00 am - 10:00 pm
Fee: No Charge

PILATES MAT CLASS *18 years and up*
Mondays and Wednesdays (Year Round) 9:00 am - 10:00 am
Fee: \$15 per class

SALSA & CARDIO *18 years and up*
Tuesdays and Thursdays (Year Round) 10:00 am - 11:00 am
Wednesdays (Year Round) 7:00 pm - 8:00 pm
Fee: \$7 per class
(Monthly series paid at beginning of each month)

SENIOR FUN CLUB *55 years and up*
Saturdays (Year Round) 10:00 am - 12:00 pm
Fee: No Charge

TAEBO FOR THE AVERAGE JOE *All ages*
Mondays (Year Round) 6:30 pm - 7:30 pm
Fee: No Charge

WOMEN'S BASKETBALL *18 years and up*
Practice: TBA Games: Wednesday nights (Year Round)
Please call the park for more information.

WOMEN'S VOLLEYBALL *18 years and up*
Starts June 25, 2008
Dates, times and fees TBA (Year Round)
For information, please call (818) 249-8505.

RECREATION

LOMA ALTA PARK

SPECIAL EVENTS

BLACK HISTORY MONTH CELEBRATION *All ages*
Saturday, February 23, 2008 *Time TBA*
Fee: No Charge

EASTER EGG HUNT *12 years and under*
Saturday, April 12, 2008 *Time TBA*
Fee: No Charge

HALLOWEEN PARTY *12 years and under*
Friday, October 31, 2008 *Time TBA*
Fee: No Charge



TURKEY SHOOT (Dart Contest) *12 years and under*
Friday, November 21, 2008 *Time TBA*
Fee: No Charge

Aquatic Activities for all at the Loma Alta Park Pool!

The Pool at Loma Alta Park has been completely refurbished inside and out! The improved pool and locker rooms are now ADA compliant as well.

Activities listed below are held during operating months (Mid-June through Labor Day). Dates and times are subject to change; for more information, call (626) 797-8903.

SWIM LESSONS *All ages*
Monday - Friday *10:00 am - 12:00 pm*
Fee: No Charge

DIVE TEAM *7 - 17 years*
Monday - Friday *12:00 pm - 1:00 pm*
Fee: No Charge

RECREATIONAL SWIM *All ages*
Monday - Friday *12:30 pm - 5:00 pm*
Saturdays and Sundays *12:30 pm - 5:00 pm*
Fee: No Charge

SWIM TEAM *7 - 17 years*
Monday - Friday *5:00 pm - 6:00 pm*
Fee: No Charge



ADULT LAP SWIM *18 years and up*
Monday - Friday *6:00 pm - 8:00 pm*
Fee: \$7 per week or \$25 per month

FAMILY NIGHT *All ages*
1st, 2nd, and 3rd Saturday of the month *5:30 pm - 8:00 pm*

TEEN NIGHT *13 - 19 years*
4th Saturday of the month *5:30 pm - 8:00 pm*

CHARLES WHITE PARK

77 Mountain View Street
 Altadena, CA 91001
 Telephone: (626) 794-3807
Hours: Sunrise to Sunset

Charles White Office Bungalow!

Look forward to a new office bungalow coming to Charles White Park. The new bungalow will allow the park to be staffed with recreation leaders during the day and the addition of new programs for the park!



PROGRAMS, ACTIVITIES & SPORTS

DISC GOLF 6 - 12 years
 Mondays, Wednesdays,
 and Fridays (Year-Round) 2:00 pm - 5:00 pm
 Fee: No Charge

HEALTHY PARK WALKING CLUB All ages
 Monday - Friday (Year Round) 9:00 am - 10:00 am
 Fee: No Charge

P.O.W.E.R. MOBILE RECREATION UNIT 6 - 12 years
 (Parks On Wheels Enhanced Recreation)
 Mondays, Wednesdays,
 and Fridays (Year-Round) 2:00 pm - 5:00 pm
 (Homework help, physical activities, arts & crafts and
 making new friends is what our P.O.W.E.R. is all about)
 Fee: No Charge

YOUTH FLAG FOOTBALL 5 - 14 years
 Begins September 20, 2008
 Dates and Times: TBA (12 game season)
 Fee: \$40/season

YOUTH GOLF 6 - 12 years
 Mondays, Wednesdays,
 and Fridays (Year-Round) 2:00 pm - 5:00 pm
 Fee: No Charge

YOUTH SOCCER 5 - 14 years
 Begins January 19, 2008
 Dates and Times: TBA (12 game season)
 Fee: \$40/season

SPECIAL EVENTS

BLACK HISTORY MONTH CELEBRATION All ages
 Saturday, February 23, 2008 10:00 am - 3:00 pm
 Fee: No Charge

EASTER EGGSTRAVAGANZA 13 years and under
 Saturday, March 22, 2008 1:00 pm
 Fee: No Charge

CESAR CHAVEZ WEEK All ages
 March 24 - 29, 2008
 Fee: No Charge

CINCO DE MAYO CELEBRATION All ages
 Saturday, May 3, 2008 10:00 am - 3:00 pm
 Fee: No Charge

DIA DE LOS MUERTOS All ages
 Saturday, October 25, 2008 11:00 am
 Fee: No Charge

THANKSGIVING FOOD DRIVE All ages
 November 2008
 Please come and drop off canned goods for the month of
 November to benefit the needy in Los Angeles County.

THANKSGIVING TURKEY TOSS All ages
 Saturday, November 15, 2008 1:00 pm
 Fee: One canned good donation.

SANTA'S COMING TO TOWN 13 years and under
 Saturday, December 20, 2008 1:00 pm
 Fee: No Charge

Opportunities to Golf in Altadena!



JUNIOR GOLF PROGRAM

The Department of Parks and Recreation's Junior Golf Program is a free golf lesson program that promotes the participation of Los Angeles County youth in the game of golf. Programs are offered throughout the year at various County courses where participants learn among other skills, how to use the driving range, chipping greens and putting greens. The Junior Golf Program provided free golf lessons to over 1,500 youth last year.

For additional information regarding program registration, please contact Mike McMonegal at (626) 821-4648 or Tim Smith at (626) 254-8533.

SPECIAL EVENTS

"HEALTHY EARTH, HEALTHY PARKS, HEALTHY YOU!" EARTH DAY FESTIVAL

April 12, 2008 9:00 am - 4:00 pm

Fee: No charge



ALTADENA GOLF COURSE

1456 East Mendocino Street
Altadena, CA 91001

(626) 797-3821

Course Hours: Sunrise to Sunset

EATON CANYON GOLF COURSE

1150 North Sierra Madre Villa Avenue
Pasadena, CA 91107

(626) 794-6773

Course Hours: Sunrise to Sunset



Come out and enjoy nature at Eaton Canyon Natural Area and Nature Center

1750 North Altadena Drive
Pasadena, CA 91107

Telephone: (626) 398-5420

Fax: (626) 398-5422

www.ecnca.org

Park Hours: Sunrise to Sunset



Eaton Canyon Natural Area is a 190-acre zoological, botanical, and geological wonderland situated at the base of the beautiful San Gabriel Mountains. Visitors can enjoy its nature and hiking trails, equestrian trails, wildlife, rocks and minerals, and plants.

The Eaton Canyon Nature Center contains many fascinating displays, live animals, offices, classrooms, an auditorium, restrooms, information desk, and gift shop. The Center is open from 9:00 am to 5:00 pm daily, except Thanksgiving, Christmas, and New Year's Day. Center staff members are present to help you find information about hiking trails, animals, plants, geology, history of the Canyon, ecology, and docent-guided tours. To find out about volunteer involvement opportunities at Eaton Canyon, call (626) 398-5420.

Eaton Canyon also has an Equestrian Staging Area that provides parking for horse trailers and a corral for warming up the horses before riding them on the equestrian trail. The entrance is on New York Drive and is open during daylight hours only.

EATON CANYON NATURAL AREA AND NATURE CENTER

EDUCATIONAL TOURS AND PROGRAMS

DOCENT-GUIDED SCHOOL TOURS *3rd - 6th graders*

October 2007 - June 2008
 Wednesdays and Fridays
 10:00 am - 12:00 pm, by appointment only
 Fee: No charge

FIELD TRIPS IN NATURE PROGRAM *All grades*

October 2007 - June 2008
 10:00 am - 12:00 pm, by appointment only
 Fee: \$5 per child, minimum of 10 children

NATURE-IN-A-BOX: TEACHER LOAN KITS PROGRAM

Year-round program
 Fee: No charge to educators
 Please call Nature Center for details.

SELF-GUIDED SCHOOL TOURS *All grades*

October 2007 - June 2008
 Mondays, Tuesdays, and Thursdays, by appointment only
 Fee: No charge

GUIDED WALKS AND EVENTS (Walks meet in front of the Nature Center)

BIRD WALK *All ages*

3rd Sunday of the month (weather permitting) 8:00 am
 Year Round
 Fee: No charge

CALIFORNIA NATIVE PLANT SOCIETY PLANT WALK *All ages*

September 2007 - May 2008 9:00 am
 2nd Sunday of the month
 Fee: No charge

FAMILY NATURE WALK *All ages*

Year round, Saturdays (weather permitting) 9:00 am
 Fee: No charge

MOONLIGHT NATURE WALK *All ages*

June 2008 - September 2008 7:30 pm
 Fridays closest to the full moon (Exact Dates TBA)
 Call the Nature Center for schedule and group reservations.
 Fee: Donation of \$2 per person

WATERFALL NATURE HIKE *All ages*

September 2007 - May 2008 9:00 am
 4th Sunday of the month (weather permitting)
 Fee: No charge

SEASONAL PROGRAMS

ADULT DOCENT/ NATURALIST TRAINING *18 years and up*

February 2008 (Exact Dates and Hours TBA)
 Fee: \$45 per training

STUDENT NATURALIST PROGRAM *12 - 17 years*

March 2008 (Exact Dates and Hours TBA)
 Fee: \$95 per person

NATURE DETECTIVE CLASS SERIES *8 - 14 years*

April - May 2008 (Exact Dates and Hours TBA)
 Fee: \$85 per person

SUMMER NATURE CAMP *6 - 12 years*

June 2008 (Exact Dates and Hours TBA)
 Monday - Friday
 Fee: \$100 per week

TWILIGHT PROGRAMS *All ages*

July, August, and September 2008
 Saturday evenings (Exact Dates and Hours TBA)
 Fee: \$3 donation per person

OUTDOOR VOLUNTEER OPPORTUNITIES

COMMUNITY SERVICE PROJECTS

School or Scouts Service Projects (Individuals or groups)
 by appointment only.

NATIVE PLANT GARDENING GROUP *All ages*

Second Sunday of the month 10:00 am - 12:00 pm
 Fee: No charge

For more information on any of these programs, please call the Nature Center.



LOS ANGELES COUNTY PARKS AND RECREATION HIGHLIGHTS

Come Grow with Us *at the* ARBORETUM & BOTANIC GARDEN

301 North Baldwin Avenue
Arcadia, CA 91007

Phone: (626) 821-3222

www.arboretum.org

Hours of Operation: 9:00 am - 5 pm (Admission closes at 4:30 pm)
Open 7 days a week (Closed December 25)

Take a tram ride through the 127-acre garden and see exhibits from around the world like the new Madagascar Spiny Forest exhibit or the Wildlife Garden, a new feature of the Roots & Shoots Children's Discovery Node. The Arboretum also features school field trips, walking/tram tours, educational classes, plant specialists, a reference library, and much more.

Admission

Adults \$7.00

Students (with student ID) \$5.00

Seniors \$5.00

Children ages 5-12 \$2.50

(Children Ages 4 and under are free)

3rd Tuesday of each month: Free Admission

Educational Classes - (626) 821-4623

Classes are available year round for adults and children.

Peacock Café - (626) 447-0641

Enjoy breakfast, lunch or a light snack on the terrace or in the sun room. The café staff is available to cater your special event, either on or off-site.

Reserve the Arboretum for Special Events - (626) 821-3204

A perfect site for meetings, corporate events, and film shoots.

Weddings - (626) 821-3211

The Arboretum provides naturally beautiful, unique settings for wedding ceremonies, receptions, and photography.

Upcoming Projects for 2008

- Daylily Trail in the Daylily and Magnolia collection
- Children's Amphitheatre in Australia
- Garden for All Seasons redesign
- Ayres Hall new trellis



ARBORETUM SPECIAL EVENTS:

Patrick Dougherty

(February 2008 - February 2010)

As part of the Art in the Garden program, The Arboretum presents an exhibition by Patrick Dougherty who will create an art installation of woven willow with several community volunteers. This ephemeral art installation will be part of a comprehensive series of education programs.

Environmental Education Fair

(March 8-9, 2008)

The annual Environmental Education Fair highlights the importance of conservation and ecology. Exhibitors will entertain and inform young people with hands-on natural science projects. Visit www.creec.org for more information.

LA Garden Show 2008

(May 2-4, 2008)

The LA Garden Show highlights gardens designed by the best designers and landscape architects in Southern California, a marketplace offering one-of-a-kind plants and garden related items, and lectures and demonstrations from well-known garden experts and authors. Dining, wine tasting, and fun, educational activities for kids are also offered.

Explore DESCANSO GARDENS

1418 Descanso Drive
La Cañada Flintridge, CA 91011

Phone: (818) 949-4200

www.descansogardens.org

Hours of Operation: 9:00 am - 5:00 pm
Open 7 days a week (Closed December 25)

This secluded, lush, dense garden northwest of Altadena has over 100,000 plants, including one of the largest displays of camellias in the world. There is also an extensive performing arts program throughout the year that includes stage and musical performances and flower and crafts shows. Walking and tram tours, horticultural classes, and lectures are also available.

Rental facilities are available for film locations, weddings, special events, corporate meetings and vendor fairs. Please call the park for more information.

Admission

Adults	\$7.00
Students (with student ID)	\$5.00
Seniors	\$5.00
Children ages 5-12	\$2.00
Members and children under 5 are Free	

SPECIAL EVENTS

For more information, please call Descanso Gardens or visit its website.

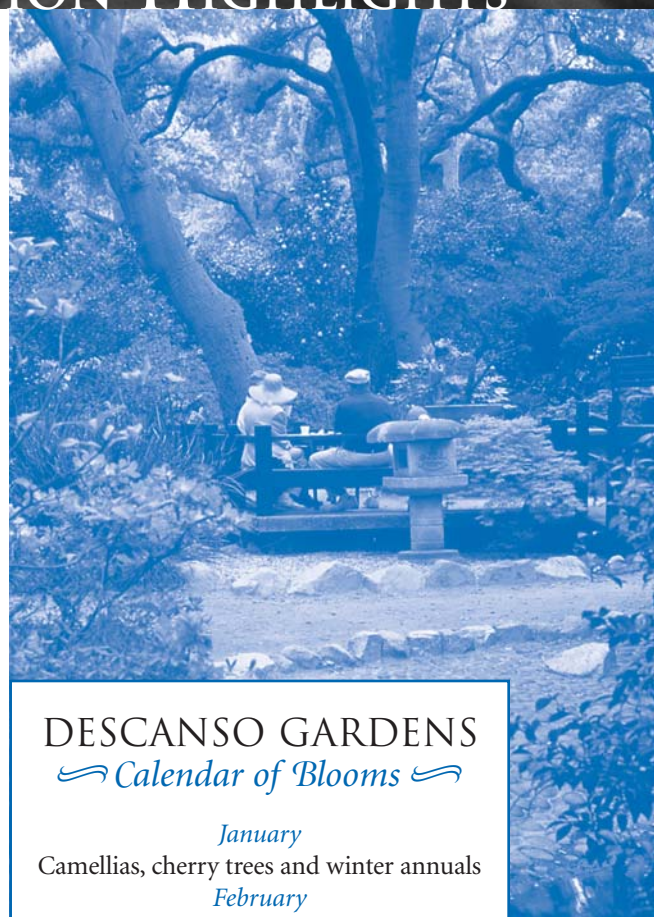
Concerts at Descanso

Descanso's Under the Oaks Theater provides an intimate, open-air setting for many events and concerts. From spring through autumn guests enjoy a wide variety of musical performances. These concerts are free with Gardens admission.



Descanso's Pumpkin Festival

Discover Descanso during the last weekend of October as it transforms into a pumpkin patch with a bumper-crop delivery of pumpkins and special events!



DESCANSO GARDENS

Calendar of Blooms

January

Camellias, cherry trees and winter annuals

February

Camellias, magnolias,
cherry trees and daffodils

March

Camellias, irises, lilacs,
cherry trees and daffodils

April

Azaleas, camellias, irises, lilacs,
native plants and wildflowers, tulips,
clivia and wisteria

May

Azaleas, camellias, roses, irises,
wildflowers and California natives

June

Modern and heritage roses and
summer annuals

July, August & September

Roses, summer annuals and perennials,
crape myrtle and cassia

October

Sasanqua camellias, roses and fall foliage

November

Camellias, toyon berries, annuals,
gingko and fall foliage

December

Camellias, toyon berries,
annuals and gingko

LOS ANGELES COUNTY PARKS AND RECREATION HIGHLIGHTS

Santa Fe Dam Recreational Area *the hidden jewel of Southern California*

15501 East Arrow Highway
Irwindale, CA 91706
Phone: (626) 334-1065 Fax: (626) 812-9196

Hours: March 1 - October 31: 6:30 am - 8:00 pm
November 1 - February 28: 6:30 am - 6:00 pm Closed Christmas Day

Santa Fe Dam Recreational Area is an 836-acre recreational facility showcasing a serene 70-acre lake with year round fishing, and non-motorized watercraft usage. During summer months, Santa Fe Dam highlights a five-acre chlorinated swim beach and unique water play area. The facility is home to many protected native plants and animals. The Nature Center is operated by volunteers of the San Gabriel Mountains Regional Conservancy and offers educational, interpretive and walking tours throughout the year.

Additional amenities available at the Santa Fe Dam Recreational Area are:

- Large and Small Picnic Areas (Call park for reservations)
- Boat Launch Area (Non-motorized crafts only)
- Bicycle, Walking and Equestrian Trails
- Wheel Fun Rentals (Cycle and rowboat rentals, kayaks, and pedal boats)
- Snack Bar
- Organized Youth Group Camping Areas
- Bait and Tackle Shop (Sells day pass fishing licenses)
- RV Camping (Call park for reservations)

Special Events for 2008

BIRD WALKS

3rd Saturday of the month
Fee: Free of charge

All ages

8:00 am - 2:00 pm

THE FRIENDS OF SANTA FE DAM MOONLIGHT FISHING

The last Friday of every month – 6:00 pm to 6:00 am the following Saturday morning

Fee: Adults (Ages 18+) \$10 | Youth (Ages 16-17) \$5 | Children (15 & under) Free

All ages

SANTA FE DAM RADIO CONTROL MODEL AIRPLANE GROUP

For more information, call (626) 358-9394. Fee: Varies

SOUTHERN CALIFORNIA ROCKET ASSOCIATION - ROCKET LAUNCHES

1st and 3rd Saturday of each month

Fee: Free of Charge. For more information, email mebowitz@earthlink.net


All ages

7:00 am - 12:00 pm

Capital Improvements

Santa Fe Dam Play Areas - Improvement consists of the replacement of the existing playground, removal of sand, and installation of the drainage system.

Santa Fe Dam Fire Line - Construction of a new dedicated eight inch steel fire line, a fire hydrant, and a fire line meter.



**Help Your Teenager
Acquire Life-Saving Skills**
*Sign up for the LA County Lake
Junior Lifeguard Program!*

9 - 17 years
June 2008 through August 2008
Fee: \$150 per session



LOS ANGELES COUNTY PARKS AND RECREATION HIGHLIGHTS



Hollywood Bowl

2301 North Highland Ave.
Los Angeles, CA 90068
Concert Info: (323) 850-2000 or
www.hollywoodbowl.com

The Hollywood Bowl, known as the world's largest natural amphitheater, features spectacular fireworks and the finest classical, pop, rock, jazz, and Latin salsa, opera, and ballet performances. For over 85 years the Hollywood Bowl has kept the public entertained with great music at affordable prices! The Bowl also features a museum, children's festivals, and picnic areas.

John Anson Ford Amphitheatre

2580 Cahuengua Blvd. East
Los Angeles, CA 90068
Show Information: (800) GO-1-FORD or
www.fordamphitheatre.org

The beautiful outdoor Ford Amphitheatre in the Hollywood Hills seats more than 1,200 people and is one of the oldest performing arts amphitheatres in Los Angeles. This unique open-air theatre was built in 1920 and designed in Judaic architecture to resemble the gates of Jerusalem. The theatre offers a wide array of performances programmed by the Los Angeles County Arts Commission featuring dance, world music, jazz, chamber music, theater, pop music, film, and family events during the months of May through October. For evening shows, grounds open two hours before show time for patrons to relax and picnic. One-hour family shows on Saturday mornings are free for children and \$5 for adults. For more information, go to www.fordamphitheatre.org.



Board the Hollywood Bowl Park-and-Ride Express! Call (323) 850-2000 for specific departure times.

The Hollywood Bowl Park-and-Ride is an express bus transportation service to Summer Season (June through September) performances at the Hollywood Bowl. There are two park-and-ride lots near Altadena:

PASADENA – Pasadena public parking lot, 240 Ramona Street (northeast corner of Marengo Avenue and Ramona Street. Enter the parking area from Ramona Street.)

ARCADIA – Arcadia Park parking lot, 405 South Santa Anita Avenue (just south of Huntington Drive.)

The service provides buses that are air-conditioned and wheelchair accessible. The fare is \$5 round-trip. Tickets are available in advance online at www.hollywoodbowl.com or by calling the Bowl Box Office at (323) 850-2000 or Ticketmaster at (213) 480-3232. Passengers with pre-purchased ride tickets are given boarding preference, provided they arrive no later than five minutes prior to their selected departure time.

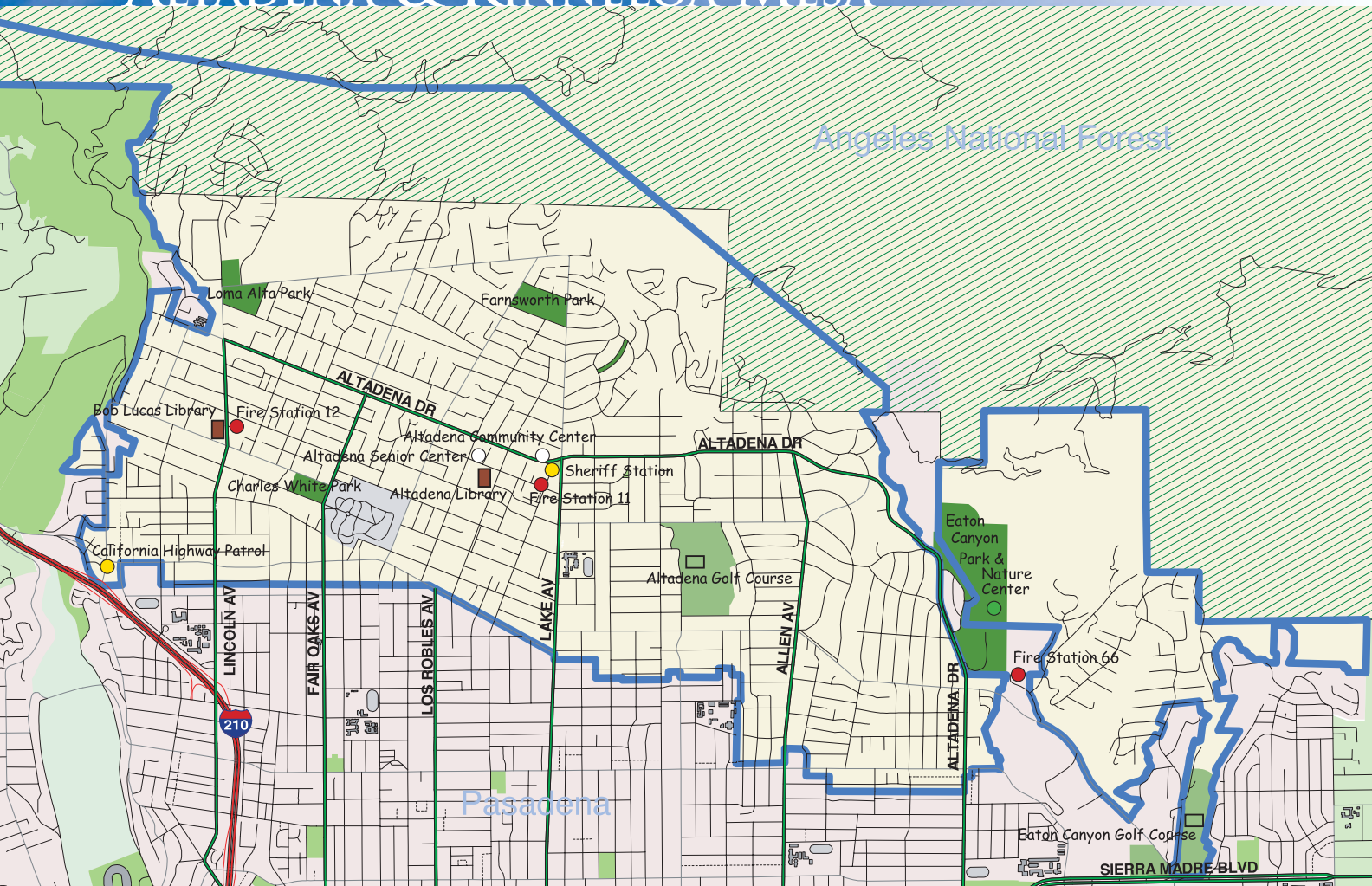
AT-A-GLANCE DIRECTORY

2-1-1 LA County Information www.211LA.org	2-1-1 or (800) 339-6993	Consumer Affairs dca.lacounty.gov Consumer protection, small claims advice, real estate/landlord issues, and disputes	(800) 593-8222
Abandoned Vehicles planning.lacounty.gov/zoneViolation.htm	2-1-1	Domestic Violence Hotline http://da.lacounty.gov/domv.htm	(800) 978-3600
Agricultural Commissioner/Weights and Measures http://acwm.co.la.ca.us		Eaton Canyon Nature Center www.ecnca.org	(626) 398-5420
Gasoline Station Consumer Complaints	(800) 665-2900	Environmental Education Programs www.888CleanLA.com	
Plant Disease Information	(562) 940-7236	Environmental Defenders (K-6th Grade)	(310) 552-6922
Utility Meter (gas, water, electric); Food Scale (markets, delis, etc.); and Packaged Goods (short weight, count, measure, etc.) Inspection and Complaints	(800) 665-2900	Generation Earth (High School)	(818) 623-4855
Weed and Brush Abatement/Removal	(626) 575-5484	Environmental Health lapublichealth.org/eh	
Air Quality Concerns www.aqmd.gov	(800) 288-7664 or (800) CUT-SMOG	24-Hour Hotline	(888) 700-9995
Animal Care and Control animalcare.lacounty.gov		Food Vehicle Inspections	(626) 430-5500
Baldwin Park Shelter (Main Hotline)	(626) 962-3577	Insect/Vector Control Program	(626) 430-5450
(Licensing, emergencies, spay/neuter clinic, lost pets)		Housing Inspections	(626) 430-5200
Arboretum www.arboretum.org	(626) 821-3222	Food Inspections	(626) 430-5250
Arts Commission, LA County www.lacountyarts.org	(213) 202-5858	Fire Department - Emergencies fire.lacounty.gov	9-1-1
Board of Supervisors Board Meetings, agendas, recordings, and transcripts 5th District Pasadena Field Office	http://bos.co.la.ca.us (626) 356-5407	Station 11 (El Molino Ave.)	(626) 797-2104
Building Permits (Residential/Business) http://ladpw.org/bsd/permitinfo	(626) 574-0941	Station 12 (Lincoln Ave.)	(626) 797-1911
Business License (unincorporated) http://ttc.lacounty.gov/Proptax/Business_License.htm	(213) 974-2011	Station 66 (Eaton Canyon Dr.)	(626) 798-3739
Business Technology Center www.labtc.org	(626) 296-6300	Freeway Roadside Service (from cell phones only)	3-9-9
Chamber of Commerce, Altadena www.abacus-es.com/altadena	(626) 794-3988	Garbage/Waste Collection Athens Disposal Company	(626) 336-3636
Children Services Child Abuse Hotline (24-Hour) http://lacdcfs.org	(800) 540-4000	www.athensservices.com	
Child Care Hotline (CalWORKs) www.ladpss.org/dpss/child_care	(877) CHILD-99	Allied Waste Company	(888) 742-5234
Child/Spousal Support cssd.lacounty.gov	(323) 890-9800	www.disposal.com	
Code Enforcement (To report violations) planning.lacounty.gov/zoneViolation.htm	(213) 974-6453 or 2-1-1	Christmas Tree Recycling	(888) CLEAN-LA
Community Center, Altadena www.altadenacommunitycenter.net	(626) 398-6174	Gardening Workshops www.smartgardening.com	
		Golf Courses parks.lacounty.gov	
		Altadena Golf Course	(626) 797-3821
		Eaton Canyon Golf Course	(626) 794-6773
		Graffiti Removal Hotline http://ladpw.org/go/graffiti	(800) 675-4357
		Hospitals/Health Centers www.ladhs.org	
		El Monte Health Center	(800) 383-4600
		Glendale Health Center	(818) 500-5762
		Los Angeles/USC Medical Center	(323) 226-2622
		Monrovia Health Center	(626) 256-1600
		Huntington Hospital (non-County) www.huntingtonhospital.com	(626) 397-5000
		Household Hazardous Waste ladpw.org/epd/hhw	(888) CLEAN-LA

AT-A-GLANCE DIRECTORY

Housing Authority www.lacdc.org	(562) 347-4663	Recycling Programs	
Home Rehabilitation Grants and Loans	(323) 890-7239	Residential Recycling	(888) CLEAN-LA
Juror Services www.lasuperiorcourt.org/jury	(213) 974-5811	http://ladpw.org/epd/Recycling	(800) 741-9236
Libraries www.altadenalibrary.org		Smart Business Recycling	(800) 741-9236
Altadena Main Library	(626) 798-0833	www.businessrecycling.com	
Bob Lucas Memorial Branch	(626) 798-8338	Registrar-Recorder/County Clerk	(800) 815-2666
LA County Public Information Office www.lacounty.gov	(213) 974-1311	www.lavote.net	
Mental Health Hotline dmh.lacounty.gov	(800) 854-7771	Voter information, marriage licenses, birth/death records, real estate recording, notary oaths	
Mosquitoes/Vector Control www.sgvmosquito.org	(626) 814-9466	Register to Vote	(800) 481-VOTE
Neighborhood Watch (Sheriff's Station)	(626) 798-1131	Safe Surrender Hotline http://babysafela.org	(877) BABY-SAFE
Ombudsman ombudsman.lacounty.info	(800) 801-0030	Senior Services www.ladcass.org	
Parks (Local) parks.lacounty.gov		Altadena Senior Center	(626) 798-0505
Charles White Park	(626) 794-3807	Adult Protective Services	(213) 351-5401
Farnsworth Park	(626) 798-6335	Elder Abuse Hotline	(877) 477-3646
Loma Alta Park	(626) 794-8811	Nursing Home/Assisted Living	(800) 330-5993
Loma Alta Gym & Comm. Center	(626) 398-5451	Sheriff Station, Altadena www.lasd.org	(626) 798-1131
Pasadena Unified School District www.pusd.us	(626) 795-6981	Town Council, Altadena www.altadenatowncouncil.org	
Post Office, Altadena 2271 N. Lake Avenue www.usps.com	(626) 794-7618	Traffic Enforcement/Investigation	
Property Taxes http://lacountypropertytax.com		California Highway Patrol	(626) 296-8100
Recorded Information 24 hrs	(888) 807-2111	www.chp.ca.gov	
Assessor - Regional Office	(626) 258-6001	Transportation	
assessor.lacounty.gov		Dial-A-Ride	(626) 791-7200
Public Social Services dpss.lacounty.gov		www.LAGoBus.Info	
Pasadena Office	(626) 791-6333	Access Paratransit Services	(800) 827-0829
Glendale Office	(818) 546-6100	www.asila.org	
Public Works ladpw.org		Metropolitan Transit Authority (MTA)	(213) 626-4455
Building and Safety	(626) 574-0941	MTA Bus Information	(800) 266-6883
http://ladpw.org/bsd		www.metro.net	
Road Maintenance	(800) 675-4357	Summer Beach Bus	(888) 769-1122
Sewer Maintenance	(800) 675-4357	Utilities	
Street Lighting Requests	(626) 300-4726	Southern California Edison	(800) 655-4555
Street/Tree Maintenance	(626) 337-1277	www.sce.com	
Traffic and Lighting	(800) 675-4357	Southern California Gas Company	(800) 427-2200
Request for Service ladpw.org/General/DPWrequest		www.socalgas.com	
		Victim-Witness Assistance Program http://da.lacounty.gov/vwap	(213) 974-7499
		Zoning Information (Regional Planning) http://planning.lacounty.gov	(213) 974-6411

ALTADENA & KINNELOA MESA



 **Community/Senior Centers**

Altadena Community Center
730 E. Altadena Drive

Altadena Senior Center
560 E. Mariposa Street

 **Parks**

Charles White Park
77 Mountain View Street

Farnsworth Park
568 E. Mount Curve Avenue

Loma Alta Park
3330 Lincoln Avenue

 **Law Enforcement**

Altadena Sheriff Station
780 E. Altadena Drive

California Highway Patrol
2130 Windsor Avenue

 **Fire Stations**

Fire Station 11
2521 El Molino Avenue

Fire Station 12
2760 Lincoln Avenue

Fire Station 66
2764 Eaton Canyon Drive

 **Libraries**

Altadena Library
600 E. Mariposa Street

Bob Lucas Library
2659 Lincoln Avenue

 **Golf Courses**

Altadena Golf Course
1456 E. Mendocino Street

Eaton Canyon Golf Course
1150 Sierra Madre Villa Avenue

 **Nature Center**

Eaton Canyon Park & Nature Center
1750 N. Altadena Drive

Visit the County of Los Angeles Website at www.lacounty.gov



If you have any comments on your Altadena Connection, write to:

**County of Los Angeles
Chief Executive Office
Office of Unincorporated Area Services**
723 Kenneth Hahn Hall of Administration
500 West Temple Street
Los Angeles, CA 90012

Or E-mail your comments to: uas@ceo.lacounty.gov



Adventure to Marina Del Rey

Burton Chace Park
13650 Mindanao Way
Marina Del Rey, CA 90292

Department of Beaches & Harbors
<http://beaches.lacounty.gov>



OUTDOOR ADVENTURES PROGRAM 2008

BIRD WATCHING EXPERIENCE *Thursdays, January through June*

Fee: Free of charge

Morning and afternoon sessions are available for free two-hour walks within the Ballona Wetlands and shoreline habitats exploring fresh and salt water marshes, and nesting sites of the Great Blue and Black Crowned Night Herons.

HARBOR KAYAKING *Saturdays, March through October*

Fees: Include all equipment and kayak.

For more information or to register, call (310) 305-9596.

Learn basic kayaking instruction and water safety, and then explore the Marina's basins.

SURF KAYAKING *Saturdays, March through October*

Fees: Include all equipment and kayak.

For more information or to register, call (310) 305-9596.

With instruction from Ocean Lifeguards, experienced kayakers can surf waves on Santa Monica Bay aboard sit-on-top kayaks.



For more information on Outdoor Adventures Programs, please call (310) 305-9596.

2008 SPECIAL EVENTS

4th of July Fireworks Extravaganza – *Friday, July 4, 2008 at 9:00 pm*

This free fireworks extravaganza over the main channel in Marina del Rey lasts approximately 20 minutes. The best places to view the fireworks are Burton Chace Park at 13650 Mindanao Way or Fisherman's Village at 13755 Fiji Way.

Free Marina Del Rey Summer Concerts – *Concerts begin at 7:00 pm. Call (310) 305-9545 for 2008 dates.*

This will be the eighth season of the very popular Marina del Rey Summer concerts held waterside in Burton Chace Park.

Discover Marina Del Rey Day – *Sunday, October 12, 2008 from 11:00 am to 4:00 pm*

This annual community event is held at Burton Chace Park and includes live music, information booths, games and inflatables, refreshments, marionette shows, a pumpkin patch, and a simulated helicopter rescue by the U.S. Coast Guard and Los Angeles County Fire Department.

Marina Del Rey Holiday Boat Parade – *Saturday, December 13, 2008 from 6:00 pm to 8:00 pm*

Boats decorated for the holiday season illuminate the Marina's main channel in one of the Marina's most visually exciting events. The best places to view the parade include Burton Chace Park at 13650 Mindanao Way or Fisherman's Village at 13755 Fiji Way.

New Year's Eve Fireworks – *Wednesday, December 31, 2008 from 11:59 pm to 12:05 am*

Fireworks shot from the south jetty will light up the sky over Marina del Rey to ring in the New Year.

For more information about these and other events at Marina Del Rey, please call (310) 305-9545.

Los Angeles County Arts Commission

1055 Wilshire Blvd., Suite 800
Los Angeles, CA 90017
Phone: (213) 202-5858
www.lacountyarts.org

COUNTY'S ARTS EDUCATION INITIATIVE MAKES GREAT STRIDES IN ALTADENA

Arts for All, the County's 10-year initiative to return meaningful, sequential arts education to all 80 County school districts, has made great progress at its halfway point. Pasadena Unified School District, which includes Altadena, is committed to the goals of Arts for All. It has adopted an arts education policy, plan, and budget, and designated an arts coordinator. The district is also taking part in Arts for All's residency program, which brings artists into the schools.



The online arts education portal, www.LAArtsEd.org, includes a searchable database of tools and resources including examples of school district arts policies, resources for strategic planning, and discussions that can support and expand schools' commitment to systemic arts education.

For more information about Arts for All, visit www.LAArtsEd.org or www.lacountyarts.org and click on "Arts Education."



OPPORTUNITIES FOR COUNTY ARTS GROUPS AND ARTISTS

Holiday Celebration

Youth and adult choral groups, music ensembles, and dance companies interested in applying to participate in the annual Holiday Celebration can visit the Commission's Holiday Celebration website at www.holidaycelebration.org for more information about the program and the application process. Applications will be available in May 2008 and are due in August 2008.

Arts Tune Ups

Get advice from art experts for free! The Commission's Tune-Ups are designed around an informal round-robin process in which participants visit a table focusing on a specific topic and spend 25 minutes with an expert discussing the topic. After 25 minutes participants move to a different table to discuss another topic. Tune-Ups are held quarterly at various locations around the County. For a schedule please call the Arts Commission at (213) 202-5858.



ANNUAL HOLIDAY CELEBRATION AND OTHER FREE CONCERTS

Come out to the annual Los Angeles County Holiday Celebration at the Dorothy Chandler Pavilion of the Music Center (135 N. Grand Avenue, Los Angeles, CA 90012) each year on December 24th. The program honors the spirit of many cultures and holiday traditions through music, song and dance. Community and professional choirs, music ensembles, folk and traditional artists, and dance companies from all around the County perform. The six-hour show is free and open to the public. For more details, visit www.holidaycelebration.org. See below for information on how you can participate in this festive event.

Throughout the year, the Commission also sponsors free music concerts in many locations around the County. For the concert schedule, go to www.lacountyarts.org/free.html.

Visit the Los Angeles County Museum of Art!

5905 Wilshire Boulevard
 Los Angeles, CA 90036
 (323) 857-6000
www.lacma.org

Come and explore more than 100,000 works of art at LACMA, the largest encyclopedic museum in the West. Through its far-reaching collections, the museum is both a resource to and a reflection of the many cultural communities and heritages in Southern California.



ADMISSION

Members	FREE
Adult	\$9.00
Seniors (62+)	\$5.00
Students 18+ (with ID)	\$5.00
Children (under 17)	FREE

After 5 pm general admission to the LACMA is FREE!

HOURS

Mondays, Tuesdays, and Thursdays:	12:00 pm - 8:00 pm
Fridays:	12:00 pm - 9:00 pm
Saturdays and Sundays:	11:00 am - 8:00 pm

LACMA is closed on Wednesdays, Thanksgiving, and Christmas.



LACMA Offers a Variety of Public Programs for All Audiences!

- **Arts for NexGen**, a program for youth, offers free admission to anyone 17 and under as well as one accompanying adult. This program includes an array of activities and events designed just for youth.
- The **Education Department** offers lectures, symposia, Conversations with Artists, Masters of Architecture series, and other programs for the general public and specialized audiences.
- The **Film Department** celebrates the international art of cinema, past and present, with thematic film series, retrospectives, and tributes devoted to the work of the art form's greatest practitioners.
- The **Department of Music Programs** annually presents over one hundred concerts featuring leading international and local ensembles in programs that cover classical, jazz, Latin, and new music. LACMA's Music Programs include Sundays Live, Friday Night Jazz, Latin Sounds, and Art & Music: Concerts at 8.
- LACMA's **Art Classes Program** offers unique opportunities to learn about art through studio classes, discussion sessions, and visits to the galleries. To enroll, call the Box Office at (323) 857-6010 or download the Class Enrollment Form from the LACMA website.
- A wide variety of **art history classes**, highlighting both special exhibitions and the permanent collection, are offered throughout the year. Each class includes a slide lecture introduction followed by a private tour of LACMA's galleries and/or special exhibition.
- **Teachers** can participate in LACMA's professional development program, Evenings for Educators, held at LACMA six evenings a year, or sign up their classes for tours of the LACMA's permanent collection or special exhibitions. School outreach programs are also available and provide unique art experiences relating to the permanent collection.

For a schedule of events and more information on public programs at LACMA, visit www.lacma.org.

Discover the **Natural History Museum**

900 Exposition Boulevard
 Los Angeles, CA 90007
 (213) 763-DINO
www.nhm.org



Things to Do

(Please call the Museum for more information)



HOURS

Monday - Friday: 9:30 am - 5:00 pm
 Saturdays, Sundays, and Holidays: 10:00 am - 5:00 pm

The Museum is closed New Year's Day, Independence Day, Thanksgiving Day, and Christmas Day.

ADMISSION

Members	FREE
Adult	\$9.00
Seniors (62+)	\$6.50
Students 18+ (with ID)	\$6.50
Children (13-17 yrs)	\$6.50
Children (5-12 yrs)	\$2.00
Children (under 5)	FREE

*Admission is **FREE** on the first Tuesday of every month.*

FIRST FRIDAYS

Family and Adult audiences

Through June 6, 2008 (first Friday of each month)

The NHM of Los Angeles County keeps its doors open late for the monthly First Fridays series. Each evening begins with a curator-guided gallery tour. Following the tour, guests are able to participate in thought-provoking discussions in a mediated forum led by distinguished scientists, environmentalists, and authors. The night closes with live performances by popular musicians and deejays. Visit www.nhm.org/firstfridays for more information.

ADVENTURES IN NATURE

Grades Pre-K to 8

Children can explore a wide variety of museum topics, such as Earth's features, and creatures and cultures from around the globe. Prices vary; Museum members receive a discount. Please call the Museum or visit the website for scheduled classes.

CRITTER CLUB

Children ages 3-5 and accompanying adult

One Saturday each month at 10:00 am, the Museum's Education Department hosts Critter Club, where kids can meet live animals, play games and create neat crafts while they learn.

PAVILION OF WINGS

All ages

Opening in April and running through early September is the Pavilion of Wings, a lush habitat where free-flying butterflies flutter around visitors.

SPIDER PAVILION

All ages

In the fall, after the butterflies leave the Pavilion of Wings, the spiders take up residence! Here, visitors enjoy a rare, close-up view of hundreds of orb weaving spiders spinning their webs.

Altadena Sheriff's Station, *Partners in Your Community*

780 E. Altadena Drive
 Altadena, CA 91001
 Phone: (626) 798-1131
 Events and Updates Website:
www.altadenasheriffs.blogspot.com



Altadena Station Welcomed New Commander Captain Roosevelt Blow in 2007!

Altadena Station now has a new commander, Captain Roosevelt Blow, who joined the Altadena Station on April 1, 2007. Captain Blow brings more than thirty years of service with the Los Angeles County Sheriff's Department including experience in the Safe Streets (Gang Enforcement) Bureau, Patrol Division, and Leadership and Training Division. Captain Blow's goals include enhancing community relations and improving safety and service to the schools, parks, and community as a whole.

Annual Events Sponsored by your Altadena Sheriff's Station

SPRING

Soap Box Derby: Altadena Station participates in the annual All-American Soap Box Derby, an outreach program for at-risk youth (ages 9-13).

SUMMER

Summer Concert Series: The Altadena Sheriff's Station and the Los Angeles County Department of Parks and Recreation host a summer concert series at Farnsworth Park at no cost to the public.

National Night Out: August 4, 2008. On the first Tuesday of August, communities across the United States participate in a variety of activities to take a stand against drugs, gangs, and violent crimes in their communities.

WINTER

Christmas Food and Toy Drive: Volunteers collect food and toys donated by the schools in Altadena, private citizens, local businesses, and community based organizations.

Graffiti Removal

To report graffiti in your neighborhood and to request graffiti removal service, call (800) 675-4357 (675-HELP). A graffiti removal request may also be submitted online at <http://ladpw.org/go/graffiti> with the option to upload photos of graffiti and check the removal status.

California Highway Patrol

2130 N. Windsor Avenue, Altadena, CA 91001
 (626) 296-8100

Traffic enforcement and accident investigations in Altadena are provided by the California Highway Patrol. If you have any questions related to traffic violations, accident reports, and vehicle impound, please contact the CHP at the number listed above.

Sheriff's Station Programs

Sheriff's Support Group of Altadena (SSGA)

The SSGA is a community service group which greatly contributes to the success of the station's special events, such as the Summer Concert Series. Visit www.altadenasheriffs.blogspot.com for the latest updates and events or visit www.altadenasheriffs.org for general information about the SSGA.

Uniform Reserves and Civilian Volunteer Program

Call the Station for information on how you can become a reserve deputy or civilian volunteer.

Altadena Mountain Search and Rescue Team (AMRT)

The AMRT is a non-profit, volunteer group dedicated to saving lives through safety, education and mountain rescue. For more details, visit the website at www.amrt.org.

Community Advisory Committee (CAC)

The CAC consists of residents, local business owners, clergy and Neighborhood Watch Captains who bring concerns from the community to Altadena station personnel, where together they work to address and resolve issues.

Altadena Sheriff's Station Clergy Council (ASCC)

The ASCC is a partnership between the faith-based community and local law enforcement. Call (626) 296-2137 for information.

Sheriff's Explorers

The Altadena Station Explorer program is a volunteer program for youth between the ages of 14-21 years old. Participants attend the Explorer Academy to learn about the law enforcement field. Upon completion, Explorers assist the Sheriff's Station.

Neighborhood Watch

Residents can join a Neighborhood Watch group in Altadena by calling (626) 798-1131.



Vacation Check

Did you know that a Sheriff's Deputy or a member of the Volunteers on Patrol will check your home or business while you are away on vacation?

Call (626) 798-1131 for more information.

The Los Angeles County Police

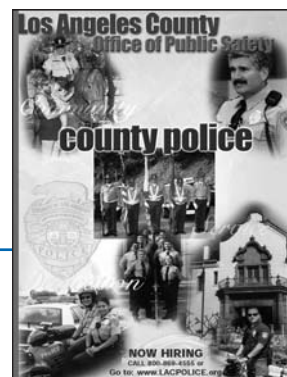
"Dedicated to the Community We Serve"

The Los Angeles County Police is responsible for providing law enforcement and security services to County Facilities including parks, beaches, performing arts facilities, and hospitals. The Los Angeles County Police has 500 sworn officers who patrol by foot, bicycle, vehicle, quad runner, horseback, and boat. All sworn members of this Department go through a Peace Officers Standards and Training program to prepare them for their role as law enforcement officers.

To report crimes that occur at County Parks or other County facilities, you can call (800) 834-0064.

The Los Angeles County Police is Now Hiring!

If you think you have what it takes to become a Los Angeles County Police Officer and want a rewarding career serving your local community, contact the Recruitment Unit at (562) 940-7228 or visit our website www.lacpolice.org.



Your Hometown Firefighters!

Fire Station 11

2521 North El Molino Ave.
Altadena, CA 91001
(626) 797-2104

Fire Station 12

2760 North Lincoln Ave.
Altadena, CA 91001
(626) 797-1911

Fire Station 66

2764 E. Eaton Canyon Drive
Pasadena, CA 91107
(626) 798-3739

FOR EMERGENCIES CALL 911

Altadena Firefighters and the Community They Serve

The firefighters who serve the residents of Altadena have strong roots in the community and an incredible sense of commitment and care for the community. Here are just a few of the many brave firefighters who keep Altadena safe.

Captain John Knowles has been with the Los Angeles County Fire Department for 25 years and has served as a Captain for 17 years. He really enjoys working at Fire Station 11 because of the camaraderie, not just with the firefighters but with the community. Knowles grew up in Sierra Madre and has always enjoyed hiking and horse back riding in the surrounding areas. "There have been very few changes since I was a kid and this area has maintained its charm," Knowles added.

Firefighter Engineer Jasmine Segura is currently part of the Urban Search and Rescue (USAR) Team where she works with a search and

rescue dog named Cadillac, whom she affectingly refers to as Caddie. Segura says the commitment it takes to work with the two-and-a-half year old black lab is worth it because the "...task and the mission to save someone trapped by an earthquake or other disaster is amazing and rewarding."

Firefighter Paramedic Anthony Woods says the one thing that firefighters have in common is we want to help people. "The people in Altadena truly cherish the Fire Department. It's nice to work here because it's a small town atmosphere and the community appreciates us."

The firefighters serve the community in a variety of ways, including going house to house to do brush inspections, providing free blood pressure checks for residents who stop by, and speaking to community groups about fire safety. **Captain Dave Yonan** says "we get to know our neighbors and residents because we are out in the community and as a result they often stop by to say hi." **Firefighter Keith Hemane**, who grew up in nearby Pasadena participates in the County's Rescue Youth program, a mentoring program for young people. Hemane who has three young sons of his own says his last youth needed help getting organized with school and preparing for exams. "This young man really enjoyed working with his hands and so after the school work was done, I would teach him about the tools we use as firefighters."

Paramedic Daniel Sheppard says he knew he wanted to be a firefighter since the age of three. Sheppard's father served with Los Angeles County Fire Department for 32 years. "I was proud to follow in my Dad's footsteps," said Sheppard.



DID YOU KNOW?... Fire Station 12, built in 1928, is the oldest fire station in Los Angeles County and was established to provide protection for the homes built in West Altadena during the real estate boom of the 1920s. County officials spent \$2,500 for the land and an additional \$9,868 for construction of the building.

PUBLIC SAFETY

The tight knit relationships are apparent as the dinner hour nears and the crew sits around the kitchen table discussing their work in the community and their love for the job. **Firefighter Todd Cope** says they work hard and are devoted to the job, but expresses his appreciation for the time off that allows him to spend with his wife of nine years, and **engineer John Camacho** succinctly sums up the sentiment in the room when he says, “On the worst day, this is still the best job.”

Fire Station 66, County Fire’s “Rock House” in Kinneloa Mesa

Los Angeles County Fire Station 66 on Eaton Canyon Drive in Kinneloa Mesa has served the Altadena community since 1934. Originally operated by the U.S Forest Service, the County Fire Department took over its operation in 1949. Local firefighters call it the “Rock House” because of its unique creek rock construction. Today, a three-firefighter engine company provides full-time staffing for the small station perched on the edge of Eaton Canyon. When fire weather increases staffing, one fire patrol unit is also based at the station.



Fire Department Historian, **Retired Fire Captain Dave Boucher**, provided some historical perspective on its roots. “The fire station had to have cost nothing to build, as the sand and the stone used to construct it were taken from the nearby creek. The labor for the project was provided by the Civilian Conservation Corps, along with other projects including the dirt roadway leading up to nearby Henninger Flats, one of the Department’s nurseries.” Retired since 1995, Boucher served the Department for over 33 years, including as a Fire Captain at Station 66 for 16 of those years.

To help protect Altadena and Kinneloa Mesa residents from the potential threat of nearby wildland brush fires in the Canyon and San Gabriel Mountains, the station provides brush clearance support to this area, known for its rich landscape on narrow roads. In addition, because Eaton Canyon and Henninger Flats offer pristine hiking trails, firefighters often respond to injuries and rescues as hikers explore the natural resources.

Since pine cones are plentiful in the area, the Department’s Forestry personnel collect cones to grow trees, which are then distributed to various communities and especially useful in landscaped areas that have experienced wildland burns and are subsequently vulnerable to floods during heavy winter rains.



Wanting to stay connected to the Altadena community, firefighters often visit local schools to discuss fire safety education. For some, working at Fire Station 66 is truly like being at home. **Firefighter Steve Knevelbaard**, who has worked at the station for the last 12 years, grew up in the Altadena area and is very familiar with the surrounding canyons, neighborhoods and the local community. **Fire Captain Ward Olson**, a 28-year veteran of the Department, also grew up in Altadena and was recently assigned to Fire Station 66. Olson says he remembers playing in the nearby wash and visiting firefighters as a young boy.



Speaking of home grown, when not responding to rescues, practicing drills, or providing community education, station personnel take time to care for this historical structure and tend to their garden, where tomatoes, zucchinis, peppers, watermelons, cantaloupes and much more are among the pickings.



HOME FIRE SAFETY TIPS

<http://fire.lacounty.gov>

Smoke Detector Safety

- Install a smoke detector on every floor and inside each bedroom of your home.
- Test and clean your smoke detectors monthly.
- Change batteries at least once a year.
- Prepare and practice an escape plan.
- Know two ways out of every room, including bedrooms.

Children and Fire Safety

- Keep lighters and matches away from children.
- Use safety plugs in electrical outlets.
- Teach children how to call for emergency assistance.

Cooking Safety

- Never leave food unattended on the stove.
- Keep dangling clothing away from burners.
- Keep appliances clean and free of grease and crumbs.
- Keep combustibles away from cooking areas.
- Turn pot handles inward on stove where you can't bump them and children can't grab them.

Portable Heaters

- Keep portable heaters and space heaters at least 3 feet away from anything that can burn.
- Use heaters only in well-ventilated rooms.
- Keep children and pets away from heaters.
- Never leave heaters on when you leave home or go to bed.
- Place heaters where they will not be knocked over easily.

Wood Stoves and Fireplaces

- Always use a protective screen.
- Clean interior of fireplaces and chimneys annually.
- Use only seasoned wood-never green wood, artificial logs or trash.

Roof

- Remove dead branches overhanging roof.
- Clean dead leaves from roof and rain gutters.
- Cover chimney outlet with a spark arrestor.

Call 9-1-1

- If you see smoke or fire, call 9-1-1 immediately.

Office of the District Attorney

210 West Temple Street, Suite 18000
Los Angeles, CA 90012
(213) 974-3512
<http://da.lacounty.gov>



BAD CHECK RESTITUTION PROGRAM

More than \$21 million in restitution has been returned to victims through the Los Angeles County District Attorney Office's Bad Check Restitution Program over the past several years.

This program was established to allow first-time bad check writers to pay full restitution to their victims and attend a diversion class in lieu of criminal prosecution. Victims are able to recoup lost funds, including any bank charges, at absolutely no cost to them or to taxpayers. Bad check writers who successfully complete the class have a recidivism rate of less than five percent, demonstrating the effectiveness of the classes.

For more information about this program, filing a complaint, and tips on how to avoid being a victim of bad checks, visit <http://da.lacounty.gov/badcheck.htm> or call (800) 842-0733.

NEW PROGRAM IN PLACE TO PROSECUTE ANIMAL CRUELTY CASES

A new program is in place to ensure uniformity throughout the county in prosecuting animal cruelty cases and to let the public know abuse of any animal will not be tolerated.

Deputy District Attorney Deborah Knaan, who has extensive experience in animal-related issues, will serve as the Los Angeles County Animal Cruelty Case Coordinator. As a result of this new program, prosecutors and law enforcement officers throughout Los Angeles County will be better trained to investigate and prosecute animal abuse cases and all branch offices will designate a specific deputy district attorney to prosecute animal cruelty cases.



Deputy DA
Deborah Knaan

In Altadena, Knaan will be working closely with the Sheriff's Department. "We want to offer training for any deputies and police officers who would like it on how to investigate animal cruelty cases, collecting evidence and writing reports," she said.

Anyone who has information on animal cruelty should call the Altadena Sheriff's Station at (626) 798-1131.



500 W. Temple St., Room B-96
Los Angeles, CA 90012
Toll-free number: (800) 593-8222
<http://dca.lacounty.gov>

Department of Consumer Affairs

The Los Angeles County Department of Consumer Affairs (DCA) is the largest local consumer protection agency in the United States providing assistance with consumer and business concerns including: Consumer Protection, Small Claims Advisors, Real Estate Fraud and Homeowner Assistance, Dispute Settlement, and Senior Abuse and Fraud Protection.

CALIFORNIA CAR BUYER'S BILL OF RIGHTS

The Car Buyer's Bill of Rights, a new law that affects the rights of California car buyers, went into effect July 1, 2006. The law impacts the purchase of new and used cars handled by a licensed dealer.

FOR USED CAR BUYERS ONLY:

- **Option to Cancel** - Any licensed dealer must offer the buyer of a used car (costing \$40,000 or less) the option to purchase a two-day option to cancel before signing the contract. This option would give you the right to cancel the sale within two days for any reason and return the used car to the dealer within two business days by closing time (unless the contract gives you more time).
- If the buyer returns the car under the conditions for the option, the dealer must give the buyer a full refund for the price of the vehicle, including sales tax, registration fees, any deposit and return of the trade-in vehicle. Dealers may however charge you a fee for the option to cancel and a restocking fee.
- **Certified Used Cars** - A dealer can call a used car "certified" or a "certified pre-owned vehicle" if they had a mechanic perform a complete inspection of the car. The dealer must provide consumers with a copy of the car's inspection report.

Dealers cannot advertise a car as "certified" if:

- The odometer does not show the true mileage of the car.
- The vehicle has been damaged by accident, fire or flood, and has not been repaired to safe operating condition before the sale.
- The vehicle has frame damage, or was sold "as-is."
- The vehicle's title has been labeled as a Lemon Law Buyback, manufacturer repurchase, salvage, junk, non-repairable, etc.

The Car Buyer's Bill of Rights law DOES NOT apply to motorcycles, off-highway motor vehicles, or private sales between individuals. For more information, call (800) 973-3370 or visit dca.lacounty.gov.

FOR NEW & USED CAR BUYERS:

- **Buyer Disclosures** - The dealer must give the buyer in writing, a list of all extra options that are added to the price of the car. This can include a service contract, an insurance product, "gap" insurance, a theft deterrent device, a surface protection product and the option to cancel agreement. The list must also show you how the cost of your monthly payments changes with and without these items. In addition, when obtaining financing from the dealer, the buyer is entitled to a "Notice to Vehicle Credit Applicant" which shows your credit score obtained and used by the dealer, the name and contact information of the credit-reporting agencies, and their range of all possible credit scores.
- **Limit on Markups** - Sometimes a "markup," or a hidden fee added to increase the interest rate on your loan, is added to the financing rate offered by the dealer. The Car Buyer's Bill of Rights now limits the markup a dealer can get. From your financing, the dealer cannot receive more than 2% of the loan amount for terms of more than 60 months, or 2.5% of the loan amount for terms of 60 months or less.



Do you need assistance with your home or business?
**County of Los Angeles
Community Development Commission**



2 Coral Circle Monterey Park, CA 91755
Phone: (323) 890-7001
www.lacdc.org

The Community Development Commission (CDC) administers various programs that provide financial and technical assistance to individuals seeking to buy or repair a home, start a business, or expand their business. Residential and business opportunities available through the CDC can be found at www.lacdc.org.



**THE BUSINESS TECHNOLOGY CENTER IN ALTADENA:
*10 Years of Helping Businesses***

2400 Lincoln Avenue, Altadena, CA 91001
Phone: (626) 296-6300
Email: info@labtc.org | www.labtc.org

The Business Technology Center (BTC) is a business innovation center dedicated to the development of start-up and early stage high technology firms through business management assistance, technical assistance, and the coordination of available financial resources. Since opening in 1998, the BTC offers key support services, including access to capital, business consulting, and mentoring from an Advisory Committee that has a wide range of skills, experience and contacts.

The BTC is a 40,000 square foot facility with a state-of-the-art communication infrastructure and 63 individual offices of various sizes that can be leased individually or in blocks. The BTC has a sophisticated telecommunications system, conference rooms, a kitchen, and an outdoor patio. The BTC is also in a state Enterprise Zone, which offers significant state tax credits to businesses.

Companies must apply for admission to the Business Technology Center by completing an application and submitting it with a business plan. Companies eligible for tenant status at the BTC must be start-up or early stage high technology firms. Companies with off-site locations may apply for Affiliate Membership which allows full access to BTC facilities and services, such as mentoring, use of conference rooms, BTC mailing address, and receptionist services. Applications can be found at www.labtc.org/services.htm.

TRAFFIC VIOLATOR SCHOOL MONITORING PROGRAM

The Traffic Violator School Monitoring Program (TVSM) operates on behalf of the Los Angeles Superior Court in monitoring all DMV-licensed traffic violator schools and approved home study traffic schools appearing on the court's Traffic Violator School Classroom Location List, to ensure that each school meets all applicable codes and regulations. TVSM also serves as a consumer advocate and as a point of contact for those interested in taking a classroom traffic violator school or home study traffic school course.

If you have questions or concerns regarding a classroom or home study traffic school program you participated in, or if you would like information on approved traffic schools or home study traffic school programs, please call (800) 555-4452 or visit <http://www.lacdc.org/CDCWebsite/TVSM/Home.aspx>.

Office of the Los Angeles County Assessor

Kenneth Hahn Hall of Administration
500 W. Temple St., Room 225
Los Angeles, CA 90012
(213) 974-3211 Toll free: (888) 807-2111

The Assessor's Department locates all taxable property in Los Angeles County and identifies their ownership and taxable values. These assessed values are the basis of property taxes which are used to pay for law enforcement, fire protection, education, parks and recreation and other vital services.

One-Stop County Property Tax Resource: <http://lacountypropertytax.com> or (888) 807-2111

ANNUAL PROPERTY TAXES: Mailed each year during the first week of October. The First Installment is due on November 1st and becomes delinquent on December 10th. The Second Installment is due February 1st and becomes delinquent on April 10th.

LOS ANGELES COUNTY AGRICULTURAL COMMISSIONER/ WEIGHTS AND MEASURES

You can turn to the Los Angeles County Agricultural Commissioner/Weights & Measures Department to protect the health and safety of your community and improve the quality of the environment through the enforcement of Federal, State and local laws and regulations.

For information on services provided by the Department, visit <http://acwm.co.la.ca.us>.

Illegal Dumping

To report illegal dumping, call
(888) 8-DUMPING.

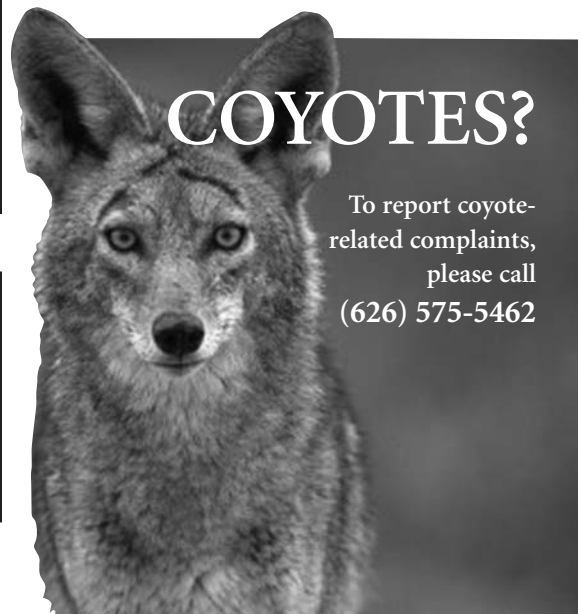
EAST DISTRICT OFFICE

1190 Durfee Ave.
South El Monte, CA 91733
Monday-Friday, 8:00 am to 5:00 pm
(626) 258-6001

Altadena property owners are served by the East District Office, which is responsible for approximately 630,000 residential and commercial properties.

Public information available at the East District or main Downtown office includes valuation, ownership, comparable sales information, maps and multi-language brochures which may be obtained from staff at the counter. Staff will also assist individuals who want to use Assessor computer terminals to access information.

The Assessor's Department also maintains an extensive, user-friendly website at <http://assessor.lacounty.gov> which includes valuation, maps and downloadable forms. Land ownership information can only be obtained in person at the East District office or by telephone.



To report coyote-related complaints, please call
(626) 575-5462

Helpful Services and Benefits Website!

The LACountyHelps.org website provides a safe, secure, confidential way for County residents to research and see if they are potentially eligible for a variety of helpful services and benefits such as Medi-Cal, Healthy Families, Healthy Kids, Child Care Resources, CalWORKs, Food Stamps, Affordable Housing Programs, Mental Health, and In-Home Supportive Services.



The website is designed to be easily navigated and is available in both English and Spanish, with plans to expand to other languages in the near future.



toy loan program

The Department of Public Social Services (DPSS) Toy Loan Program allows children to borrow toys free of charge, in the same manner as they borrow books from a public library. The program is designed to help children foster positive attitudes through a merit system that rewards them when toys are borrowed and returned undamaged and in a timely manner. Please call (213) 744-4344 for more information.

You are invited to visit the Toy Loan Center in Altadena at Loma Alta Park - 3330 Lincoln Ave.



Adoption Promotion Support Services Program (APSS) for Adoptive Families

If you are a foster parent, relative, or family who has adopted a child through the Los Angeles County Department of Children and Family Services (DCFS), free support services are available through APSS. These community-based services include adoption mentors, support groups, and individual, group and family therapy. A case manager can also link you to other services such as educational services, special education services, health care services, childcare, transportation, and substitute adult role model services.

Supportive services are for adoptive families of any child younger than 18 years of age at any stage of the adoption whether it is before, during, or after the adoption has finalized. A Medi-Cal card for the child is necessary for therapy services.

To obtain a referral for services, contact your Children's Social Worker at DCFS. For more information, call toll-free (800) 735-4984 or visit <http://laccdfs.org/adoptions/services.html>.

Did You Know?

Free income tax preparation services are available to DPSS-eligible participants through the Volunteer Income Tax Assistance (VITA) program. There are over 80 VITA sites throughout the Los Angeles County, including the Villa Park Community Center, 363 E. Villa St. in Pasadena.

For more information on the VITA Program, please call 2-1-1 during tax season (February through April).



Convenient E-Government Resources on the Internet!

Did you know that there are many valuable Public Works services that you can conveniently access from the Internet?

Request for Service:

<http://ladpw.org/General/DPWrequest>

To report problems and request general services with potholes, tree trimming, flood control channels, or street sweeping.

eNotify: <http://ladpw.org/go/enotify>

eNotify is an automated e-mail system that sends out alerts, events, and newsletters to subscribers. You can subscribe to notifications for upcoming free and low cost seminars, workshops and vendor fairs for businesses, hazardous household waste roundup events, road closure alerts, and press releases.

Service Locator:

<http://dpwgis.co.la.ca.us/website/ServiceLocator>

The Service Locator lets you know what construction projects, utilities, road work, and transit services are in your community.

Suggested Pedestrian Route to School:

<http://dpw2.co.la.ca.us/website/laco2>

This website provides your family with a suggested pedestrian walking map to your school. Parents should review the suggested route with their children to verify safety and local conditions.

Directory of Services:

<http://ladpw.org/General/Directory/Services>

The Directory of Services provides contact information for services offered by Public Works and includes a search feature.

FAQ's: <http://ladpw.org/General/FAQ>

Search for Frequently Asked Questions, or submit a new question online.

Forms Online:

<http://dpw.lacounty.gov/General/Forms>

Search for Public Works forms and applications such as applications for building permits, special moving provisions, certificate of insurance permits and contracts, industrial waste forms and permits, Adopt-a-Highway applications, and more.

Animal Care and Control Baldwin Park Animal Shelter

(serving Altadena)

4275 North Elton Street

Baldwin Park, CA 91706

(626) 962-3577

<http://animalcare.lacounty.gov>



SHELTER HOURS:

Monday - Thursday:

12:00 pm - 7:00 pm

Friday - Saturday:

10:00 am - 5:00 pm

Sundays and Holidays:

Closed

Emergency Services are available 24 hours a day, 7 days a week

Please contact the Baldwin Park Shelter to request service or if you have any questions relating to licensing and care of dogs, cats or other pets.

Lost Pets: Pet owners are encouraged to visit the shelter in person to identify lost pets. Be sure to bring identification to prove ownership. You can also visit <http://animalcare.lacounty.gov> to view photos of lost pets brought to the shelter.

LOW-COST VACCINATION CLINICS AND FREE MICROCHIPS OFFERED THROUGH THE BALDWIN PARK ANIMAL SHELTER

The Department of Animal Care and Control encourages all pet owners to take advantage of low-cost vaccinations for pets offered to residents of Altadena at the Baldwin Park Shelter or many other locations. Vaccinations are offered Wednesdays and Thursdays from 1:00 p.m. to 2:30 p.m.

Vaccination prices are:

RABIES (Available for dogs and cats 4 months of age and older) **\$6**

DHLPP (6-in-one; available for dogs 8 weeks of age and older) **\$14**

BORDETELLA (Available for dogs 8 weeks of age and older) **\$11**

FVRCP (Available for cats 8 weeks of age and older) **\$14**

All residents of unincorporated areas in Los Angeles County are required to have their dogs spayed or neutered, and microchipped. Microchips are a reliable and permanent identification system that cannot be altered, lost or removed. Hundreds of animals have been reunited with their owners because of this simple, non-surgical procedure.

FREE microchips and free lifetime registrations with the department are also available.

For microchip clinic information visit our website or call the Baldwin Park Animal Shelter.

Department of Regional Planning

320 West Temple Street, Los Angeles, CA 90012
Phone: (213) 974-6411, Fax: (213) 626-0434
<http://planning.lacounty.gov>



Are You Planning Any Home or Business Improvements?

Call the Department of Regional Planning to obtain the most current land use and zoning information on your property, or if you have Internet access, you can use our online GIS database at <http://planning.lacounty.gov/intGisMaps.htm>. This interactive map and database is user-friendly and lets you search by your address or Assessor's Parcel Number (APN). You may also send requests by e-mail to zoningldcc@planning.lacounty.gov or by fax to (213) 626-0434.

To speak to a planner in person regarding your home and business improvement projects, you may visit Regional Planning at the following locations:

San Gabriel Valley Field Office

125 South Baldwin Avenue
Arcadia, CA 91007
Monday and Wednesday: 8:00 am - 12:00 pm
1:00 pm - 4:30 pm
Thursday: 8:00 am - 12:00 pm
Phone: (626) 447-3575 or (213) 974-6393

Downtown Headquarters

320 West Temple Street, Room 1360
Los Angeles, CA 90012
Monday - Thursday: 7:30 am - 5:30 pm
Phone: (213) 974-6411

Participate in Altadena Community Standards District (CSD) Update!

In response to concerns expressed by community residents, Regional Planning is working on an amendment to the Altadena Community Standards District (CSD). The amendment includes additional development standards and design guidelines to ensure that certain types of new residential structures are compatible with adjacent homes and the character of the community. For additional information regarding this project, visit <http://planning.lacounty.gov/docOrd.htm> or contact Mitch Glaser at (213) 974-6476 or mglazer@planning.lacounty.gov.

Has the County's Housing Problem Impacted You?

Regional Planning is also currently updating its Housing Element and needs your help in identifying existing housing needs, as well as planning for future housing needs for all income levels in the unincorporated communities. The Housing Element is a component of the Los Angeles County General Plan. Please tell us how housing has impacted you. To get project updates and find out how you can get involved, visit <http://planning.lacounty.gov/housing.htm>, or contact the Housing Section at (213) 974-6425 or housing@planning.lacounty.gov.



Zoning Enforcement Helps Protect Your Property Value!

Illegal or inappropriate uses of land can contribute to your community's deterioration and may attract criminal activities. Regional Planning helps to maintain your neighborhood's quality of life by preventing unsuitable uses of land through active zoning enforcement. A list of common zoning violations in the Altadena area can be found at <http://planning.lacounty.gov/zoneViolation.htm>.

If you observe or suspect any violations in your neighborhood, please call 2-1-1 from your home phone to report violations, or (213) 974-6483 if you have questions. You may also submit your complaint through e-mail (zoningenforcement@planning.lacounty.gov) or via fax at (213) 217-5108.

Know your rights when you are solicited for house number painting!

If you need assistance in resolving a curb painting issue or would like to report a violation, please contact the County of Los Angeles Department of Public Works, Alhambra Main Permit Office at (626) 458-3129.

HEALTH/ENVIRONMENTAL SAFETY AND CODE ENFORCEMENT



The Los Angeles County Department of Health Services (DHS) and Department of Public Health (DPH) provide direct patient care and public health services for County residents. These departments operate hospitals, a multi-service ambulatory care center, and numerous health centers and clinics.

The Los Angeles County USC Medical Center and El Monte Comprehensive Health Center are public medical resources available to the residents of Altadena. They provide care for the entire family, and services are by appointment or on a same-day basis. These facilities accept public and private insurance payments, as well as cash payments. Low-cost and in some instances, no-cost services are provided to County residents. Bilingual staff is available.



Los Angeles County USC Medical Center (LAC+USC)

1200 North State Street, Los Angeles, CA 90033

Information: (323) 226-2622

Appointments: (323) 226-5112

Customer Service: (323) 226-5111

HOURS:

Monday-Friday 8:00 am - 5:00 pm

Emergency Services are open 24 hours a day

Los Angeles County +USC Medical Center (LAC+USC) is one of the largest acute care hospitals in the nation and provides a full spectrum of emergency, inpatient and outpatient services which include medical, surgical and emergency/trauma services. A Women's and Children's Hospital provides obstetrical, gynecological, pediatric and specialized neonatal intensive care services, as well as psychiatric services. LAC+USC also operates one of three burn centers in the County and one of the few Level III Neonatal Intensive Care Units in Southern California.

Free parking for visitors is available in Lot 9 on Marengo Street and Lot 12 on Zonal Avenue.

El Monte Comprehensive Health Center

10953 Ramona Blvd., El Monte, CA 91731

Information and Appointments: (800) 383-4600

Dental Clinic: (626) 579-8391

Pharmacy: (626) 579-8419

The Center provides full service primary care for all ages, specialty care and dental care. The Center offers a low-income assistance plan and accepts Medi-Cal.

The services provided include:

Immunizations

Pediatric Care

Adult Primary Care

Adult Specialty Care

Radiology

Family Planning

Family Dental Care

Pharmacy Services

Laboratory Services

Protect Your Property Value! Nuisance Abatement Teams (NAT):

If you would like to report problem properties with serious or multiple (building, health, zoning) code violations, you may call, write or fax your complaint to:

San Gabriel Valley DPW Building & Safety District Office

125 South Baldwin Avenue

Arcadia, CA 91007

Phone: (626) 574-0941

Fax: (626) 446-4425

If your complaint does not warrant a visit by the NAT, it will be referred to the appropriate agency.



Environmental Protection Program

The Department of Public Health, Bureau of Environmental Protection provides a wide array of services to protect public health:

- **Solid Waste Management:** Regulates landfills and the collection, transfer, and disposal of solid waste. Investigates complaints related to waste haulers and illegal dumping.
- **Swimming Pools:** Inspects public swimming pools, spa pools, and special purpose pools to ensure they are built, maintained, and operated in conformance to applicable regulations, and certifies individuals who clean and service both public and private swimming pools.
- **Water Quality:** Monitors ocean water along the County coastline and posts warning signs anytime ocean water quality standards are not met. Closes beaches whenever there is a known sewage or chemical spill that affects ocean water.
- **Environmental Hygiene:** Responds to environmental hygiene complaints from the public such as noise, odors, asbestos and other chemical hazards. This program also regulates and enforces ordinance regulations such as noise level standards and body art establishments such as tattoo parlors.
- **Radiation:** Inspects X-ray and radioactive material users in the County such as medical, dental, and industrial facilities, and investigates incidents of radiation overexposure and radiological emergency incidents.
- **Garment:** Enforces sanitation and occupational health and safety requirements within garment manufacturing establishments, commercial laundries, commercial laundry vehicles, unlicensed commercial buildings, and wiping cloth establishments.
- **Land Use:** Reviews and approves plans for installation or repair of septic systems, domestic water supply wells, and other special use wells. Also determines if the water produced from private wells meets State Drinking Water Standards.
- **Cross Connection and Water Pollution Control:** Protects potable water supplies served by public water companies from contamination or pollution by ensuring that no hazardous conditions exist.

For more information regarding Environmental Protection programs, please call (626) 430-5270.

Your Sewer Service Charges at Work:

TV Inspections to Keep Sewer Drains Free and Clear

The Department of Public Works (DPW) has a sewer assessment program in Altadena as part of the County's on-going sewer maintenance and rehabilitation efforts.

In 2008, DPW will conduct closed-circuit television inspections of all County sewer lines in Altadena. Under this program, van crews collect video data in pipe segments to identify any deficiencies and engineers determine if the sewer facilities should be repaired or replaced. The televising prioritizes focus on those sewers with the most potential for repair needs. Maintenance history, past overflow records, sewer locations, and age are some of the factors used to determine the priority of pipes to be televised.

PROTECTING YOUR SEWER SYSTEM FROM FATS, OIL, AND GREASE

The build up of fats, oil, and grease (FOG) in sewer pipelines can hamper the free flow of wastewater in the sewer system. Build-up over time will block the sewer pipes and cause sewer back-ups into homes and businesses, or overflow onto streets and private properties. This creates a health hazard as well as a costly mess for home and business owners to clean up. This also results in more frequent cleaning of the public sewer lines and increase costs to ratepayers.

DPW wants you to know that there are simple steps you can take when disposing of fats, oils, and grease to keep sewer pipes from clogging.

Sources of FOG in the sewer system

Meats, cooking oils, shortening, butter, margarine, baked goods, and dairy products are a major source of FOG in the sewer system. When not disposed of properly, FOG can cling to the insides of the sewer pipes and cause build-ups.

Tips to Help you Reduce FOG in the Sewer System



DO NOT...

- dump cooking oil, fat and grease into the kitchen sink or toilet bowl.
- use hot water and soap to wash grease down the drain, because it will cool and harden in your pipes or in the sewer down the line.



DO...

- place cooled cooking oil and meat fats in sealed non-recyclable containers and discard with your regular garbage.
- use paper towels to wipe residual grease or oil off of dishes, pots and pans before washing them.
- install grease traps or interceptors in large apartment buildings and food service establishments and make sure they are always in good working order.

HEALTH/ENVIRONMENTAL SAFETY AND CODE ENFORCEMENT

Healthy Planet

Keep Your Community Clean

(888) CLEAN-LA • www.888CleanLA.org



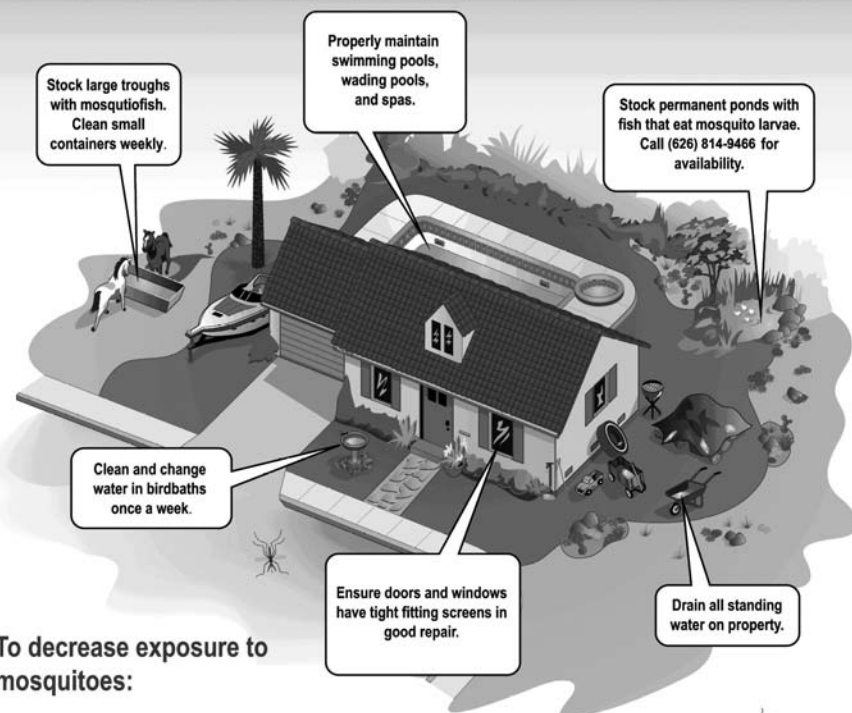
Hazardous Household Waste Collection Events

The County sponsors Household Hazardous Waste/E-Waste (HHW/E-Waste) Collection Events where residents can drop off their hazardous waste and electronic waste, such as lawn/garden-care products, paint, automotive fluids and batteries, beauty products, medicine, household cleaners, and electronic equipment. Collection Events are scheduled in different areas throughout the County and are free to the public.

For information on HHW/E-Waste, upcoming collection events and permanent collection centers in your area, please call (888) CLEAN-LA or visit www.888CleanLA.com.

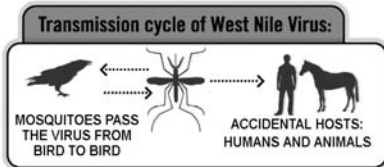


How can I protect myself and my family from West Nile Virus?



To decrease exposure to mosquitoes:

- Avoid outdoor activity at dawn and dusk during the mosquito season (May to October). This is particularly important for the elderly.
- Wear loose fitting long pants and long sleeve shirts when outdoors
- Use approved mosquito repellents containing DEET. Be sure to read and follow the manufacturer's directions for use.



Facts About West Nile Virus

What is West Nile Virus?

West Nile Virus (WNV) is a virus that can be transmitted by infected mosquitoes to birds, humans, and some animals, and can cause serious illness or death. The virus is most prevalent from May to October when the number of mosquitoes tends to be the highest.

What are the symptoms of West Nile Virus?

Most people who are infected with WNV have no symptoms. Of those who become ill, mild symptoms may include fever, headache, body aches, nausea, skin rash on the trunk of the body, and/or swollen lymph nodes. Mild symptoms generally last a few days.

In severe cases, meningitis or encephalitis (inflammation of the brain) may occur. Severe symptoms may include high fever, neck stiffness, disorientation, coma, tremors, paralysis, and even death. The elderly and people with weak immune systems are particularly susceptible to developing severe symptoms.

Please consult your healthcare provider if you think you have WNV.

For more information on WNV, please call the Los Angeles County West Nile Virus Hotline at (800) 975-4448 or visit <http://lapublichealth.org>.

To report mosquito problems in Altadena, contact the San Gabriel Valley Mosquito and Vector Control District at (626) 814-9466 or www.sgvmosquito.org.



Ride the Altadena Summer Beach Bus

From mid-June through Labor Day, catch the Altadena Summer Beach Bus and enjoy the surf, sand, and surroundings at Santa Monica Beach!!

Beach Bus Stop Locations

Lincoln Ave./Ventura St. (SE corner)
 Loma Alta Dr. (in front of Loma Alta Park)
 Mariposa St./Santa Rosa Ave. (SW corner)
 Altadena Dr./Maiden Ln. (SW corner)
 New York Dr./Allen Ave. (SE corner)
 Altadena Dr./New York Dr. (SW corner)

Departs

9:15 am
 9:25 am
 9:35 am
 9:40 am
 9:45 am
 9:50 am

Returns

4:15 pm
 4:20 pm
 4:30 pm
 4:35 pm
 4:40 pm
 4:45 pm

FARES:

All Children & Adults	\$3.00
Senior Citizens (62+)*	\$1.50
Persons with Disabilities	\$1.50

**with proper identification*

Children under 12 years of age must be accompanied by an adult.

The Bus arrives at Santa Monica Beach by 11:00 am (depending on traffic), and departs from Santa Monica Beach at 3:00 pm.

For more Summer Beach Bus information including accommodations for riders with disabilities and for large groups, call (888) 769-1122, or www.LAGoBus.Info and click on the "Recreational Transit Services" link in the left hand column.



Access Services Provides Transportation for Disabled Residents of Altadena

Access Paratransit is an Americans with Disabilities Act (ADA) mandated curb-to-curb shared ride public transportation service for people unable to use regular bus or light rail services. Access Paratransit requires an in-person certification interview in order to become a registered rider.

How to become a certified

Access Paratransit Rider: Call Access Customer Service at (800) 827-0829 or TTD (800) 827-1359
 Operators available Monday-Friday: 8:00 am - 5:00 pm

How to reserve a ride:

Call Access Paratransit Reservations at (800) 883-1295

Hours of Vehicle Operation: Monday - Friday, 4:00 am to 12:00 am

One-way Fares:

Trips up to 19.9 miles	\$1.80
Trips 20 miles or greater	\$2.70
Within service area between 9:00 pm to 5:00 am	\$1.50

Get Additional Information on ADA Accessible Transportation Options in the Altadena Area

For additional specialized public and private transportation service information, call **ACCESS RIDE INFO** at (800) 431-7882, (TDD 800-431-9731) Monday through Friday, 8:00 am to 5:00 pm and a specialist will provide you with information on public and private providers with ADA accessible transportation options, including local dial-a-rides, in Los Angeles County.

Altadena Residents are Eligible for a Discounted Metro Transit or EZ Pass!



By residing in unincorporated Los Angeles County, residents of Altadena and Kinneloa Mesa are eligible to participate in the County's Transit Pass Subsidy Program with Metro!

How to get your discounted transit pass:

- Obtain age and residency certification by visiting a Customer Center location, filling out a certification application, and providing proof of residency and eligibility. Proof of eligibility varies by category. Customer Centers are located at:

Gateway Customer Center, 1 Gateway Plaza - East Portal, Los Angeles
(Monday through Friday, 6:00 am - 6:30 pm)

Wilshire, 5301 Wilshire Blvd., Los Angeles
(Monday through Friday, 9:00 am - 5:00 pm)

East Los Angeles, 4501 "B" Whittier Blvd., Los Angeles
(Tuesday through Saturday, 10:00 am - 6:00 pm)

Baldwin Hills Crenshaw Plaza
3650 W. Martin Luther King Jr. Blvd., Suite 101B, Los Angeles
(Tuesday through Saturday, 10:00 am - 6:00 pm)

- Once you have your eligibility certification form, you may purchase your monthly pass at the Customer Center or at an approved pass sales outlet. The approved pass sales outlet in Altadena is: **Ralph's**, 2270 North Lake Avenue, Altadena. (626) 794-1175.

Eligible residents can participate in the County's transit Pass Subsidy Program for discounted Metro Passes and EZ passes as follows:

Seniors/Disabled: Regular Price \$14
Transit Pass Subsidy Price \$8

Students (K-12): Regular Price \$24
Transit Pass Subsidy Price \$16

College/Vocational: Regular Price \$36
Transit Pass Subsidy Price \$25

EZ Seniors/Disabled: Regular Price \$35
Transit Pass Subsidy Price \$21

Metro General Pass: Regular Price \$62
Transit Pass Subsidy Price \$48

EZ General Pass: Regular Price \$70
Transit Pass Subsidy Price \$56



For additional information, call (626) 458-5960 or visit www.LAGoBus.Info and click on the "Metro Transit Pass Subsidy Program" link in the left hand column.

Department of Public Works – Road Improvement Projects

PROJECT LOCATION	TYPE OF WORK	TENTATIVE CONSTRUCTION SCHEDULE
Eaton Canyon Reservoir near Washington Blvd.	Reconstruct pavement at flood control facilities	Summer 2007
Altadena Drive between Santa Rosa Ave. and Allen Ave.	Roadway and pavement reconstruction	Summer 2007 - Spring 2008
Fair Oaks Ave. between Altadena Dr. and south of Woodbury Dr. <i>(see more information below.)</i>	Roadway reconstruction	Summer 2007 - Spring 2008

For more information on these projects, please contact Kitty Shih at (626) 458-3910.

FAIR OAKS AVENUE AND ALTADENA DRIVE ARE GETTING A FACE LIFT



The County of Los Angeles Department of Public Works is currently constructing roadway improvements on Fair Oaks Avenue and Altadena Drive in the Altadena area. The improvements on Fair Oaks Avenue from Altadena Drive to Woodbury Road consist of reconstruction of the roadway pavement, curb, gutter, sidewalk, curb ramps, and raised median. Coastal Oak trees will be planted along both sides of Fair Oaks Avenue to enhance the community. Construction started in early July 2007 and is scheduled to be completed in March 2008.



NEW LARGE STREET NAME SIGNS IN ALTADENA

The County of Los Angeles Department of Public Works is currently installing new street name signs along major roads in Altadena. The new signs will bear the County seal and “Altadena.” The new signs are also larger than typical signs to comply with Americans with Disabilities Act (ADA) regulations.





Did you know that you can dial 2-1-1 to access information for emergency food and shelter, senior services, childcare, employment resources, low-cost health care, alcohol and drug-related support, volunteer opportunities, and many other health and human services?

As a resident of Altadena, you can just simply dial 2-1-1 to access an array of municipal services, including code enforcement at no cost to you. The 2-1-1 information service is provided in many languages. 2-1-1 is operated 24 hours a day, 7 days a week. The information you provide to the resource advisors is confidential.

If you are unable to access 2-1-1 directly, please call (800) 339-6993 or visit the 2-1-1 LA County website at www.211LA.org.

NOTE: *In case of an emergency, you still must dial 9-1-1.*

¿Sabía usted que puede llamar al 2-1-1 para recibir información en cuanto a comida de emergencia y refugio, servicios para ancianos, cuidado para niños, recursos de empleo, cuidado de salud a bajo costo, apoyo relacionado con problemas con alcohol y drogas, oportunidades como voluntario, y muchas otros recursos de servicios humanos y salud?

Como residente del Altadena, usted simplemente puede marcar el 2-1-1 para obtener una variedad de servicios municipales, incluso refuerzo de código sin costo alguno. Se brinda el servicio de información del 2-1-1 en muchos idiomas. 2-1-1 funciona las 24 horas al día, 7 días de la semana. La información que usted brinde a los consejeros de recursos es confidencial.

Si usted no puede obtener acceso al 2-1-1 directamente, favor de llamar al (800) 339-6993 o visite el sitio web del 2-1-1 del Condado de LA en www.211LA.org.

AVISO: *En caso de una emergencia, usted aún tiene que marcar el 9-1-1.*

STRATEGIC PLAN



County Vision

Our purpose is to improve the quality of life in Los Angeles County by providing responsive, efficient and high quality public services that promote the self-sufficiency, well-being and prosperity of individuals, families, businesses and communities.

Our philosophy of teamwork and collaboration is anchored in our shared values:

- **A can-do attitude** - we approach each challenge believing that, together, a solution can be achieved.
- **Accountability** - we accept responsibility for the decisions we make and the actions we take.
- **Compassion** - we treat those we serve and each other in a kind and caring manner.
- **Commitment** - we always go the extra mile to achieve our mission.
- **Integrity** - we act consistent with our values.
- **Professionalism** - we perform to a high standard of excellence.
- **Respect for diversity** - we value the uniqueness of every individual and their perspective.
- **Responsiveness** - we take the action needed in a timely manner.

Our position as the premier organization for those working in the public interest is established by:

- A capability to undertake programs that have public value;
- An aspiration to be recognized through our achievements as the model for civic innovation; and a pledge to always work to earn the public trust.

County Mission

TO ENRICH LIVES THROUGH EFFECTIVE AND CARING SERVICE

Strategic Plan Goals

- | | |
|---------------------------------|------------------------------------|
| 1. Service Excellence | 5. Children & Families' Well-Being |
| 2. Workforce Excellence | 6. Community Services |
| 3. Organizational Effectiveness | 7. Health & Mental Health |
| 4. Fiscal Responsibility | 8. Public Safety |

COUNTY OF LOS ANGELES BOARD OF SUPERVISORS

Gloria Molina
First District

Yvonne B. Burke
Second District

Zev Yaroslavsky
Third District

Don Knabe
Fourth District

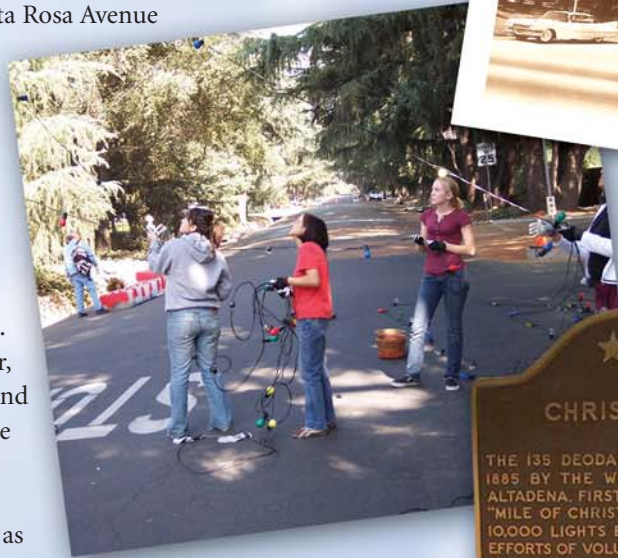
Michael D. Antonovich
Fifth District

Help Save Christmas Tree Lane!

Christmas Tree Lane, located on Santa Rosa Avenue between Woodbury and Altadena Drive, is one of five places in Altadena designated as a California State Landmark. Each year, the Christmas Tree Lane Association (CTLA) painstakingly strings over 10,000 lights in these magnificent deodar trees that were planted along Santa Rosa Avenue back in the 1880s. On the second Saturday of December, a festive Lighting Ceremony is held and people come from all over to view the mile long spectacle.

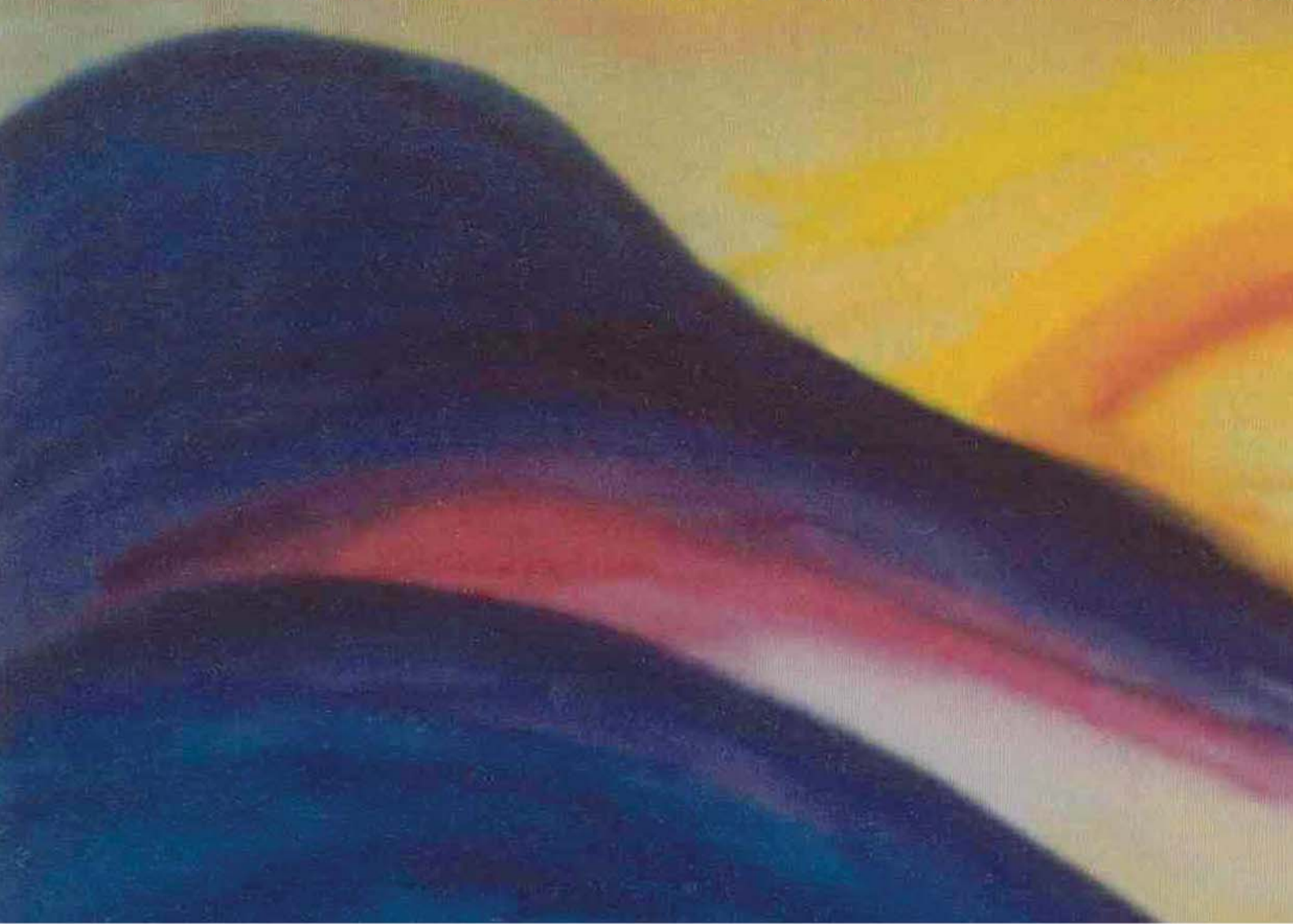
Despite Christmas Tree Lane's status as a State Historical Landmark, it is just a small number of dedicated people who maintain this historical treasure. Only a small number of CTLA members were available last year to maintain the trees and put up the lights and that number is getting even smaller.

Taking care of Christmas Tree Lane is a year-round affair. Lights are put up in the trees on Saturday and Sunday mornings starting in October, and continues every weekend until the lighting ceremony. Refreshments are served for the volunteers in the morning and lunch is served immediately afterward. In February, the lights and lines are taken down. From March through June, CTLA rebuilds the lines, tests and replaces faulty bulbs, and clears the brush growing under the deodar trees.



The magic of Christmas Tree Lane is dependent upon community volunteers in order to function, and your help is urgently needed! Scout troops and service groups are welcome!

Please call (626) 403-1123 or visit www.christmastreelane.net for more information on how to get involved.



Residential Customer